

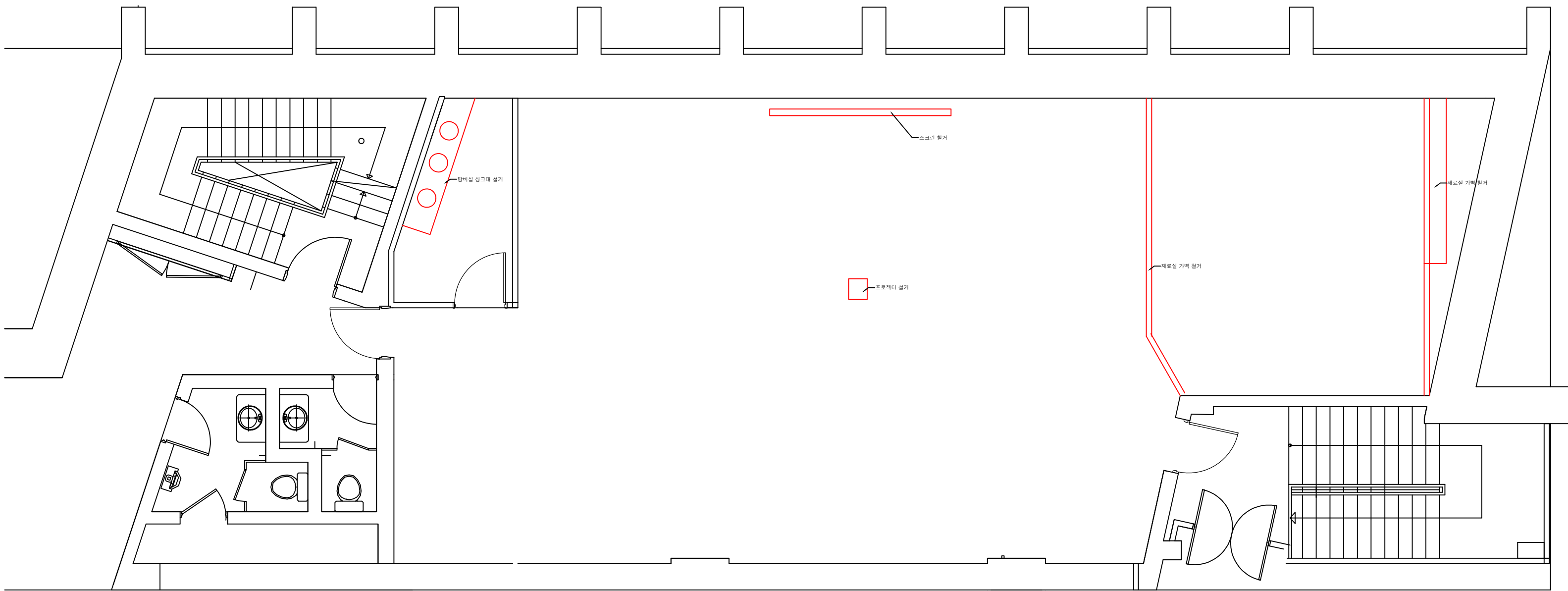
2025년 경기도어린이박물관 교육 및 사무공간 개선

2025.08.18

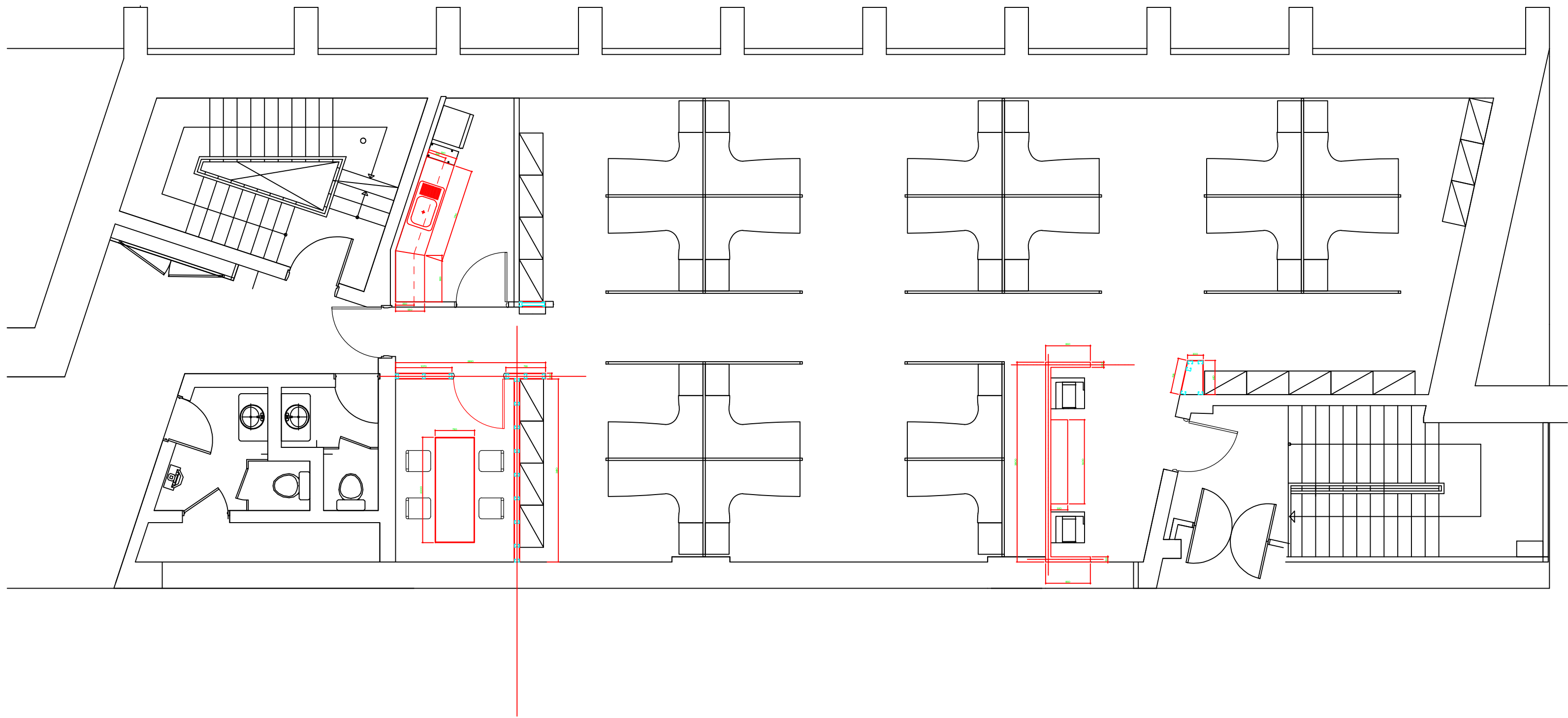
C.N. ARCHITECTS, ENGINEERS & DEVELOPMENTS

청.남.건축사.사무소

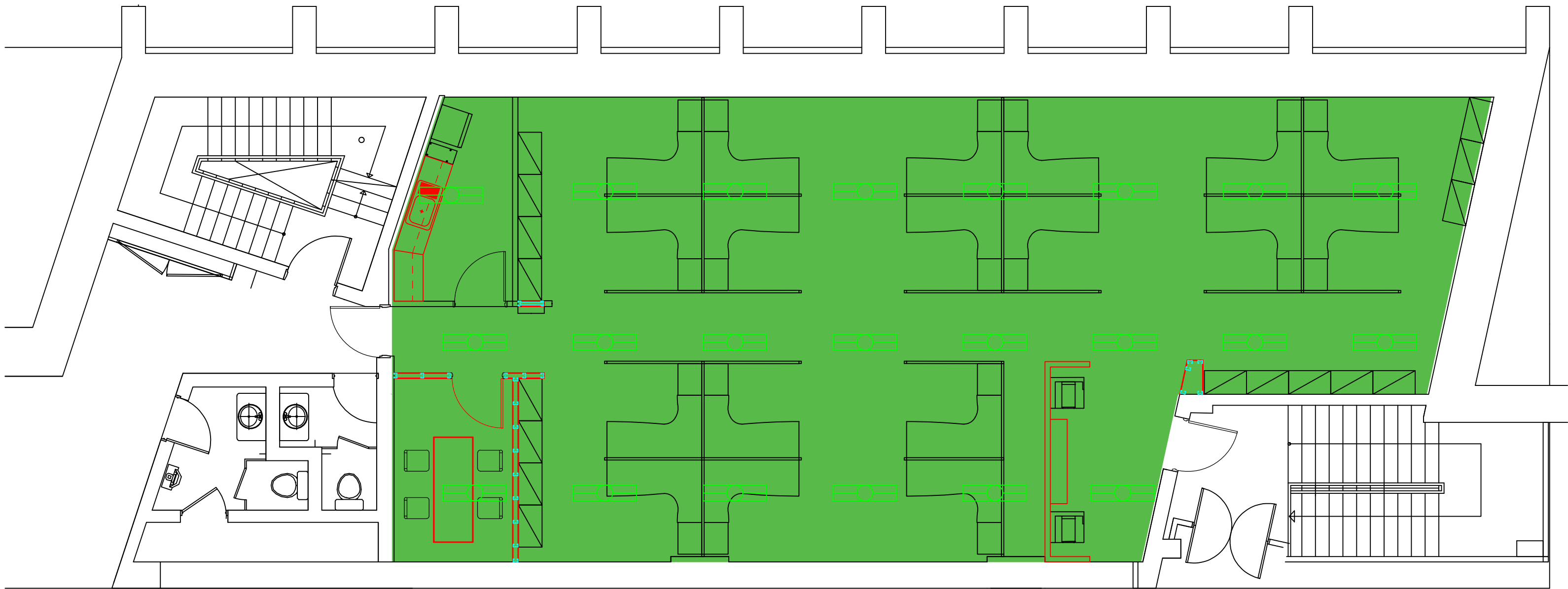
2 층 사무실



1 2층 사무실 철거 평면도
A-101

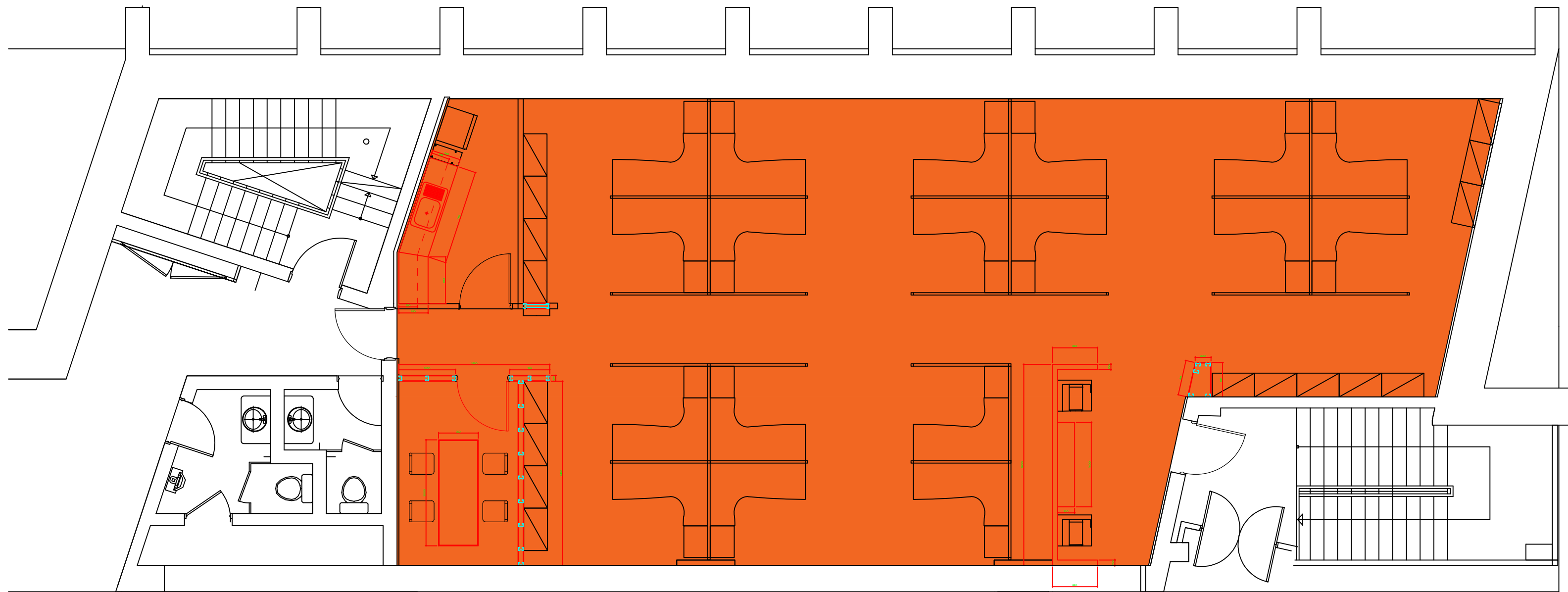


1 2층 사무실 평면도
A-101



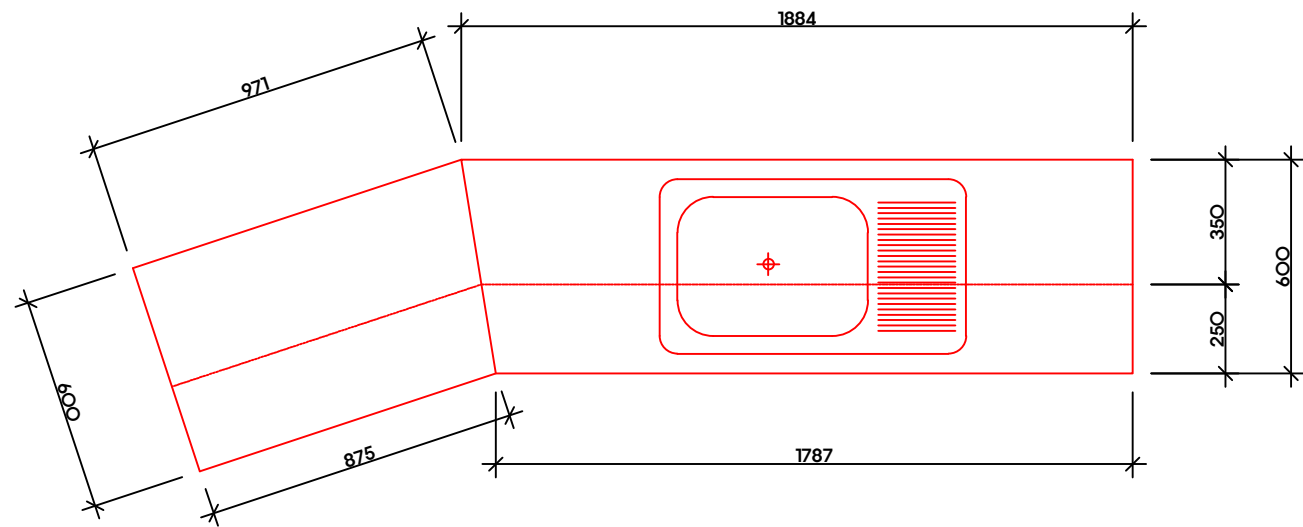
1 2층 사무실 천정도
A-102

주
기
- 기존가벽 철거후 천정보수, 복원
- 기존벽면 및 천정 지정색 재도장

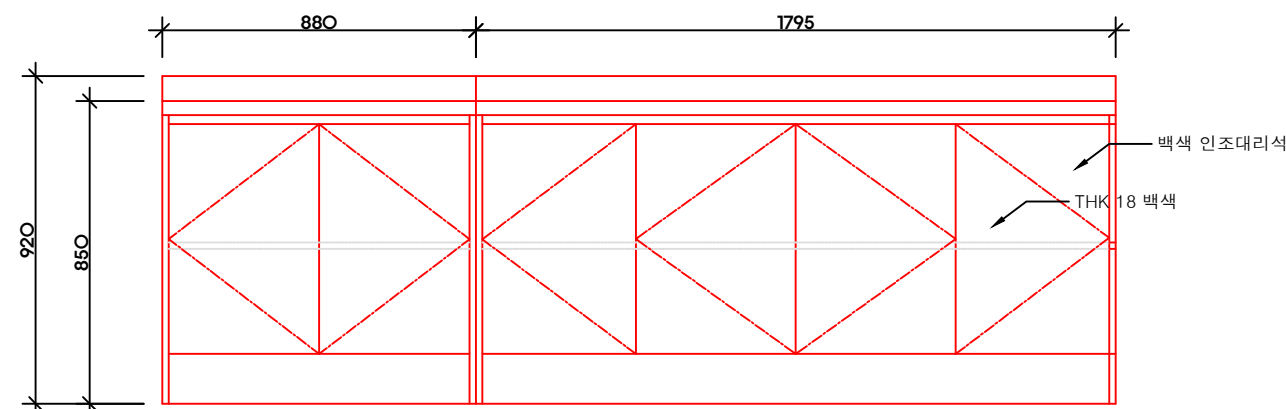
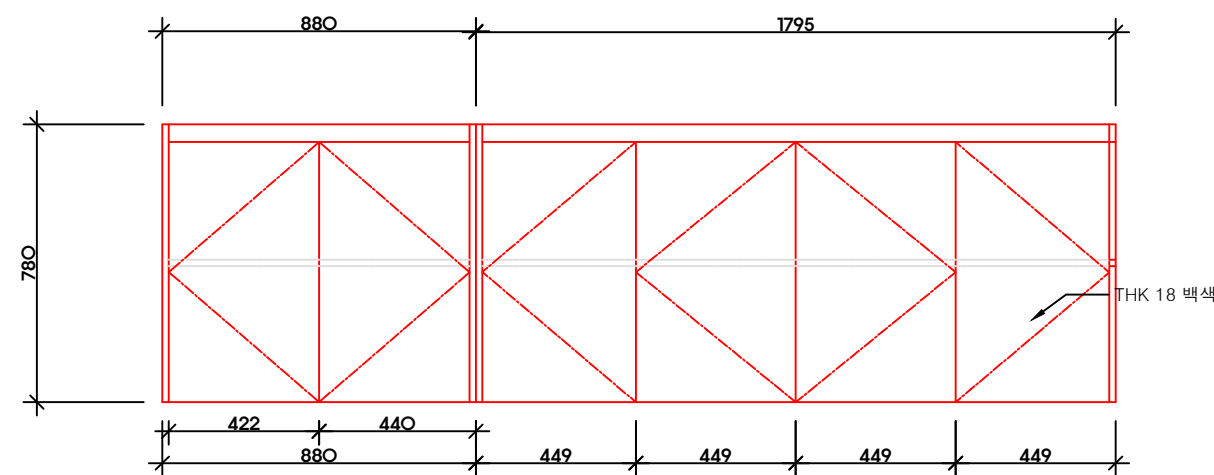


1 2층 사무실 바닥마감도
A-103

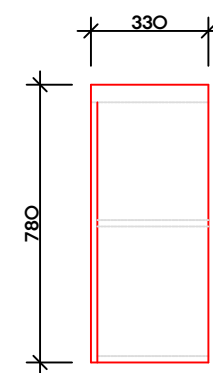
- 기존가벽 철거후 바닥보수, 복원
- 기존바닥 세척 및 코팅



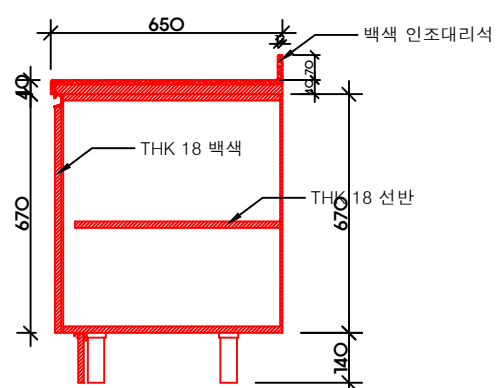
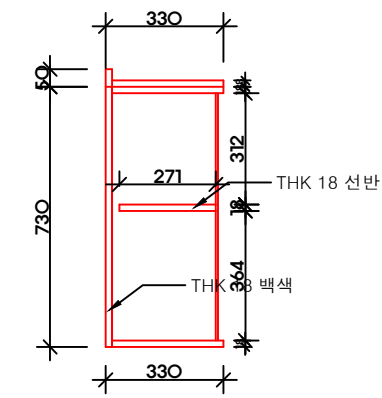
싱크대 평면도



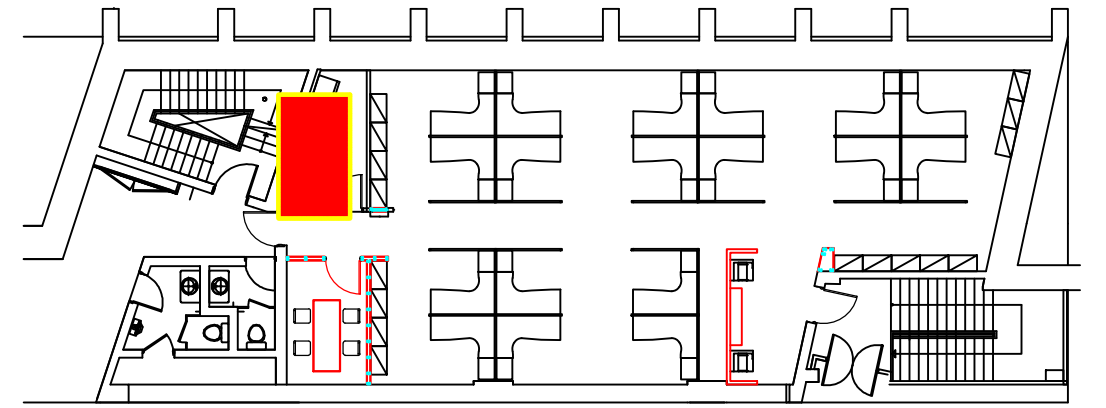
싱크대 입면도



싱크대 측면도

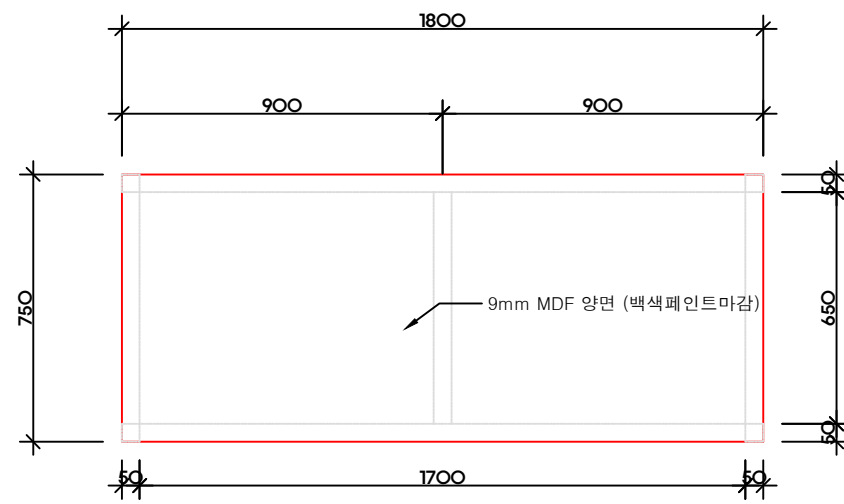
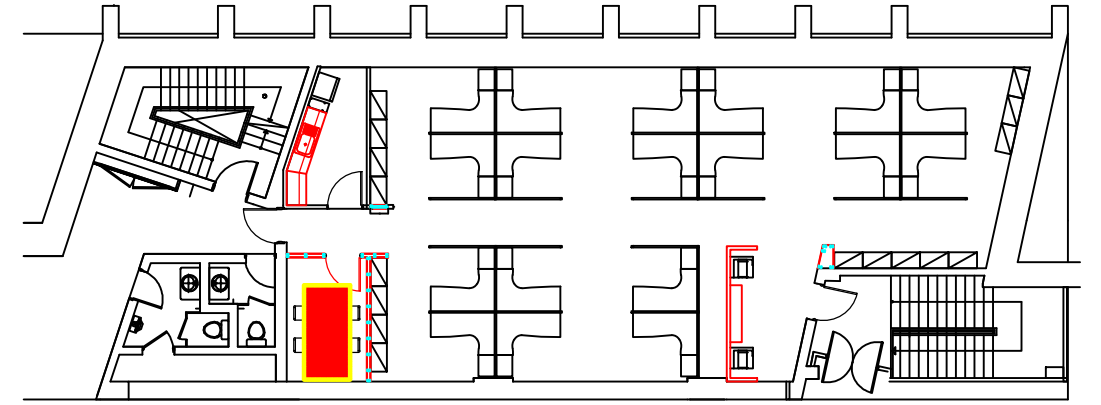


싱크대 단면도

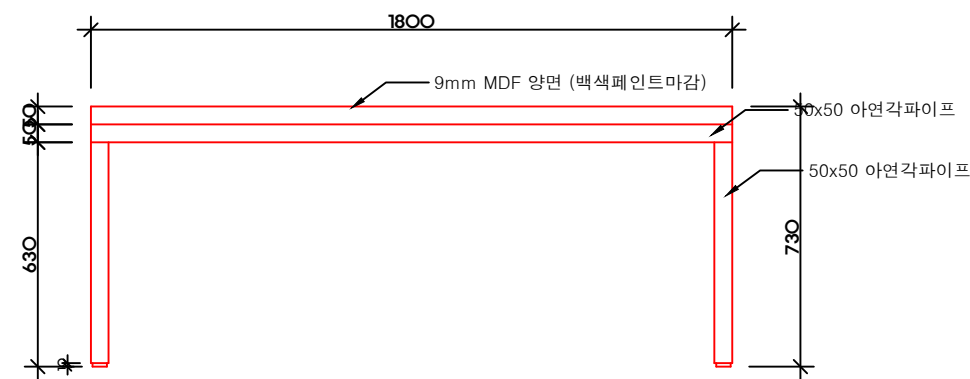


1
A-201

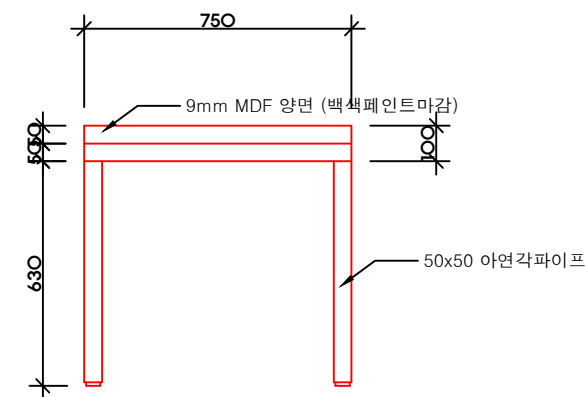
2층 사무실 싱크대



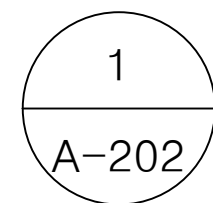
테이블 평면도



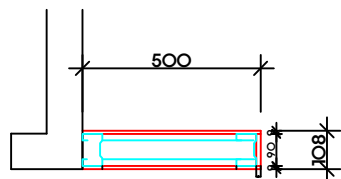
테이블 입면도



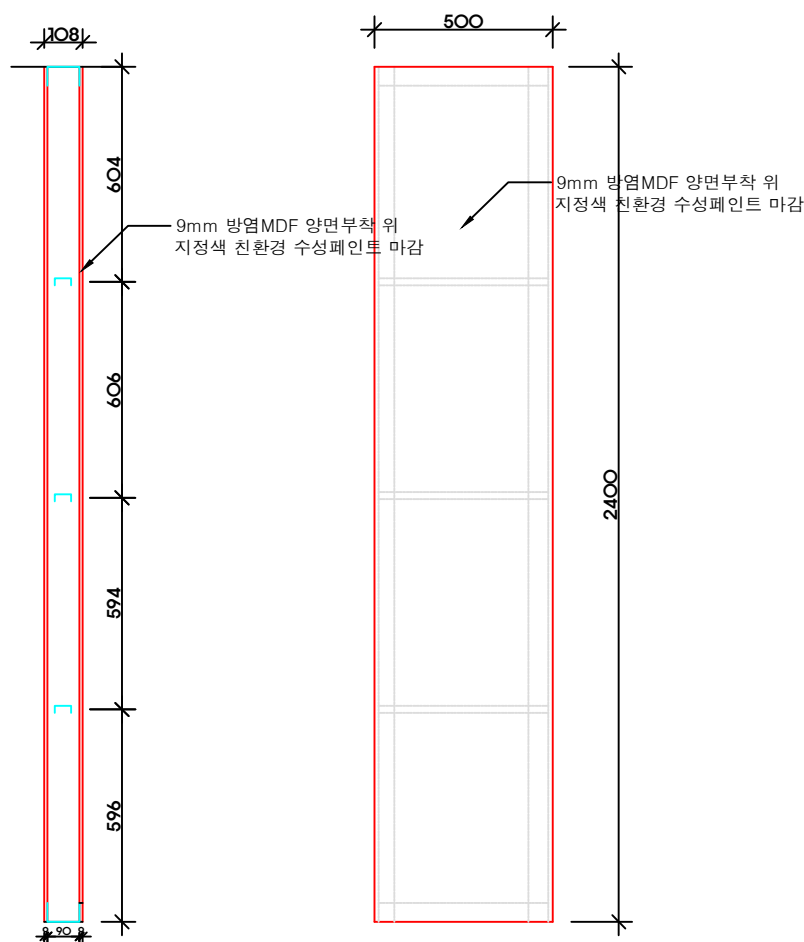
테이블 측면도



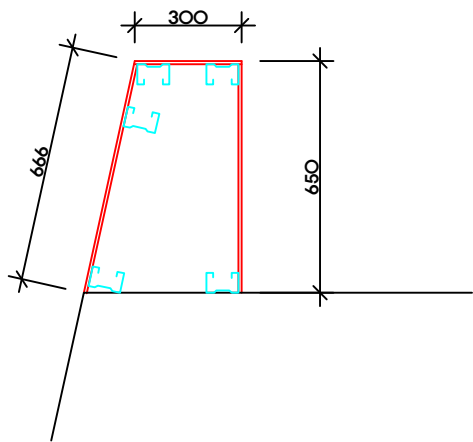
2층 회의실 테이블



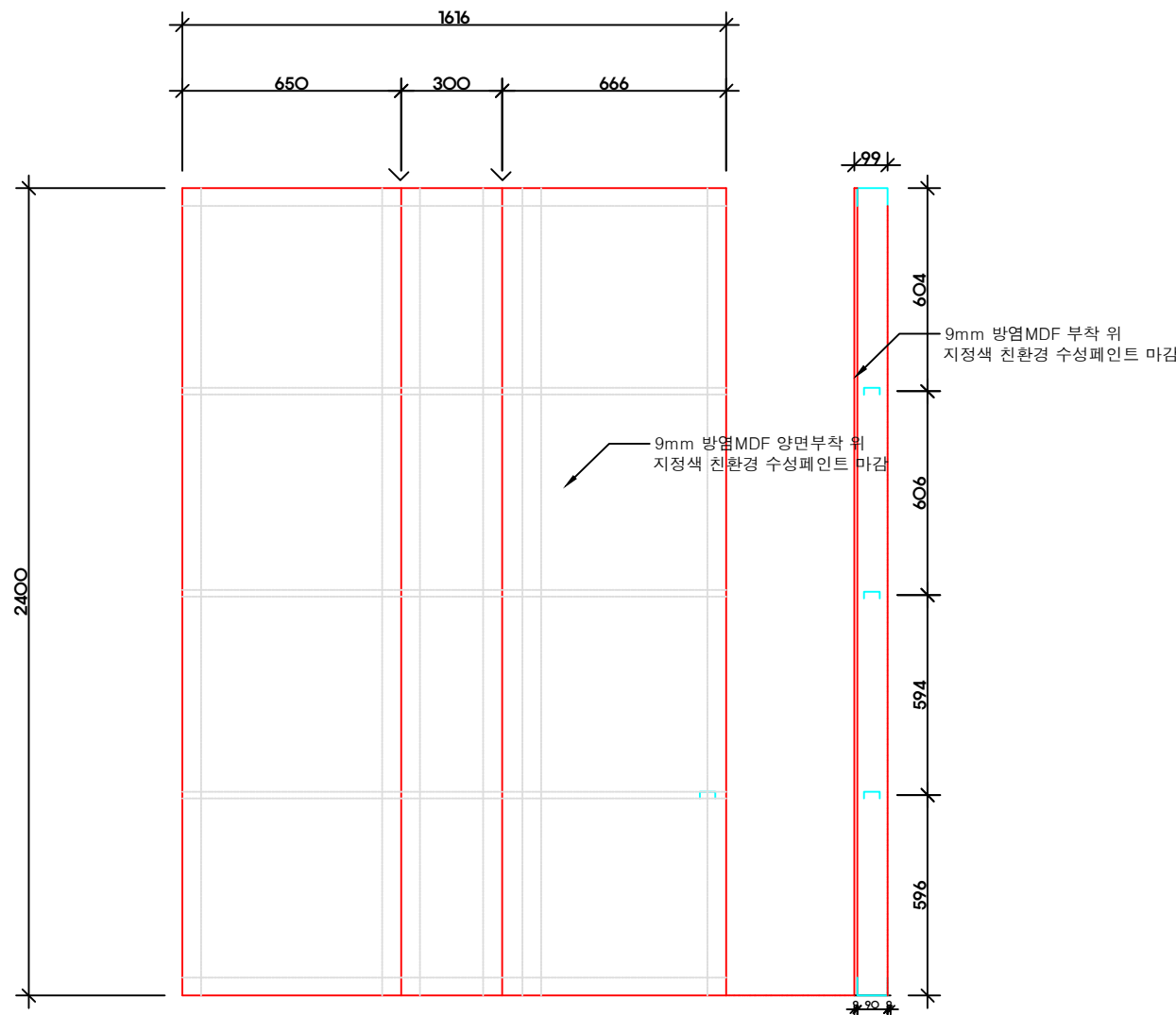
벽체 평면도



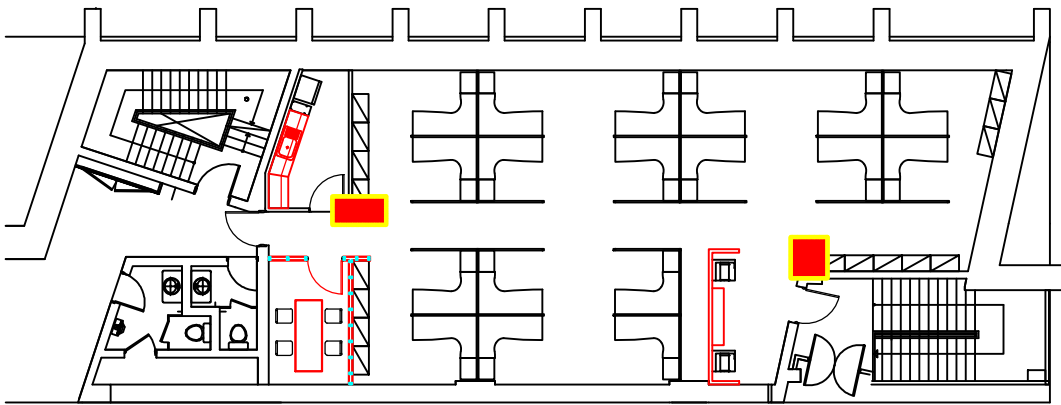
벽체 입, 단면도



벽체 평면도

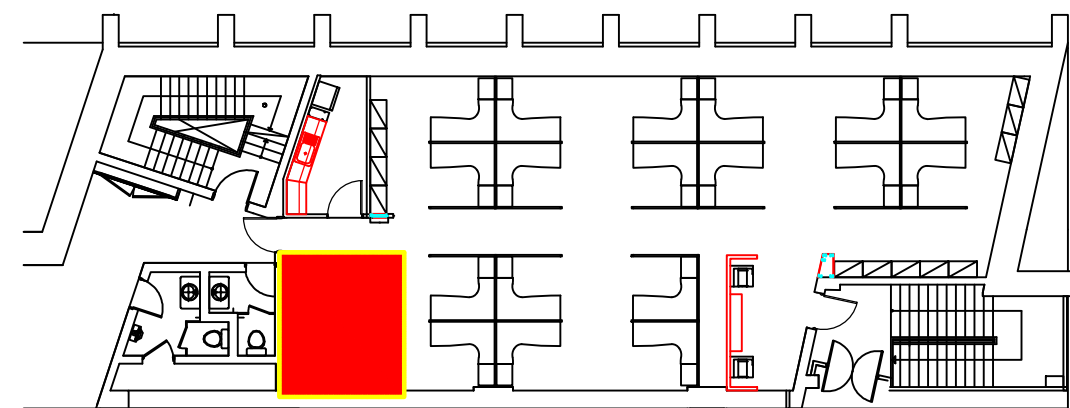
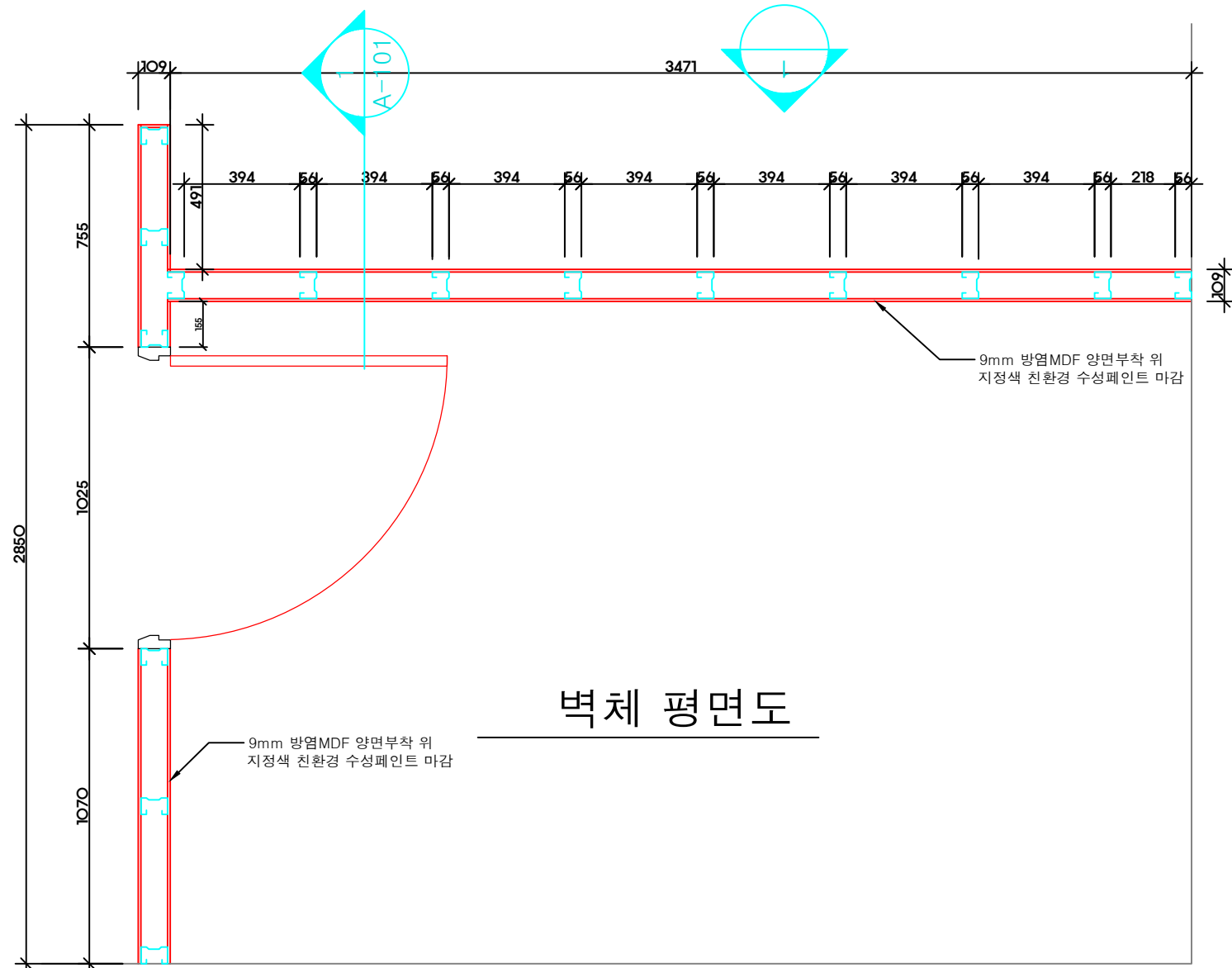


벽체 전개도, 단면도

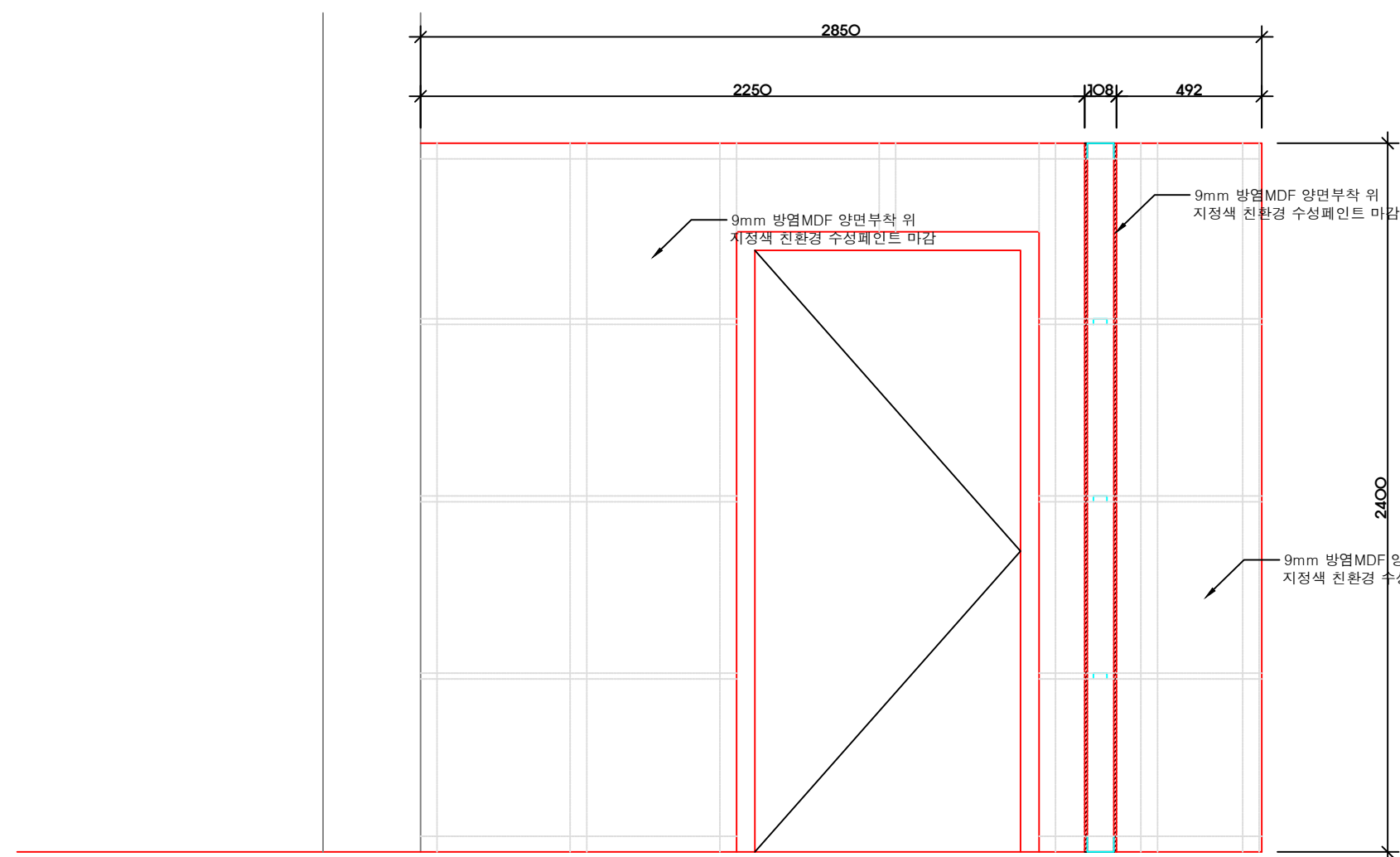


1
A-203

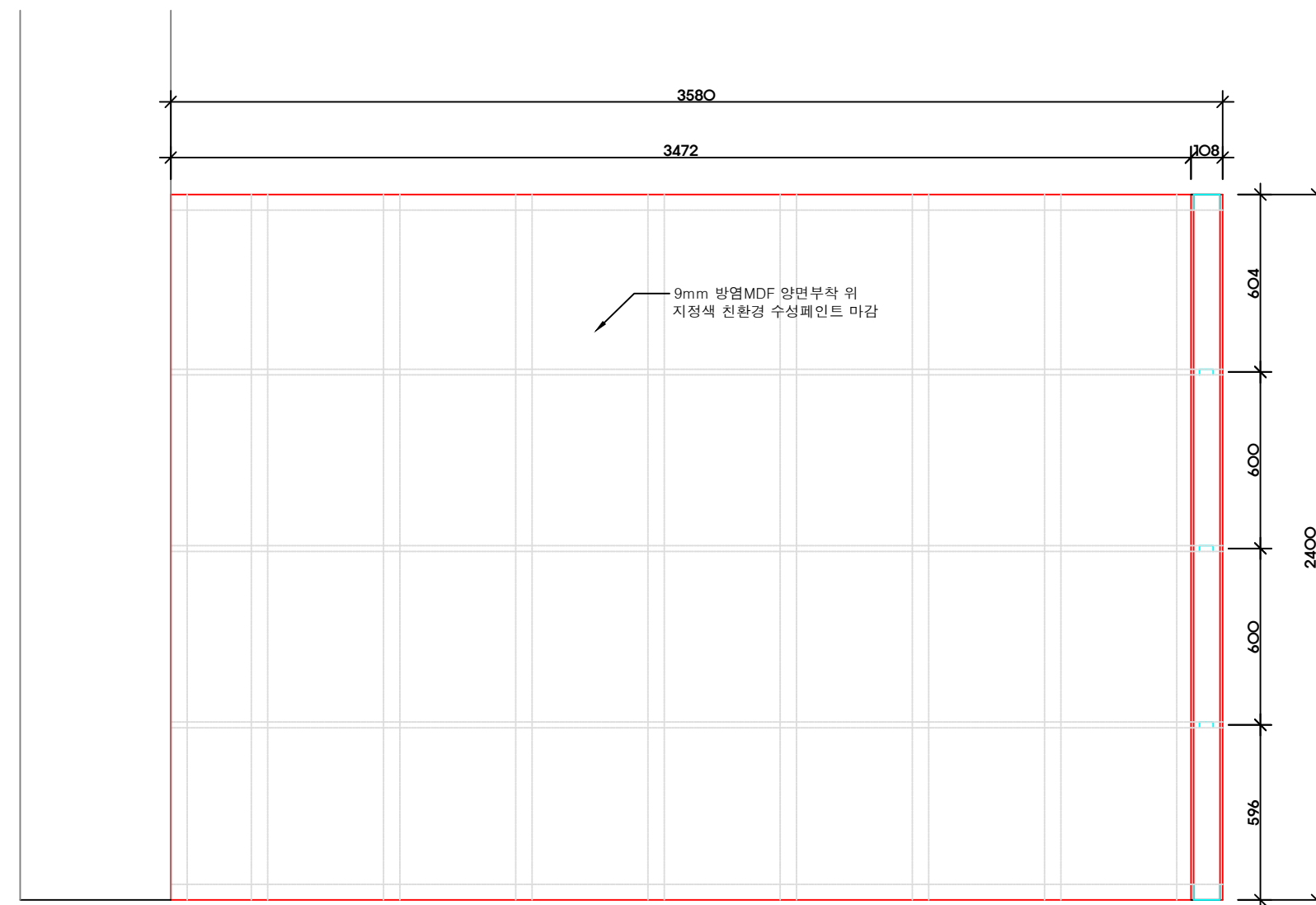
2층 사무실 칸막이 벽



벽체 평면도



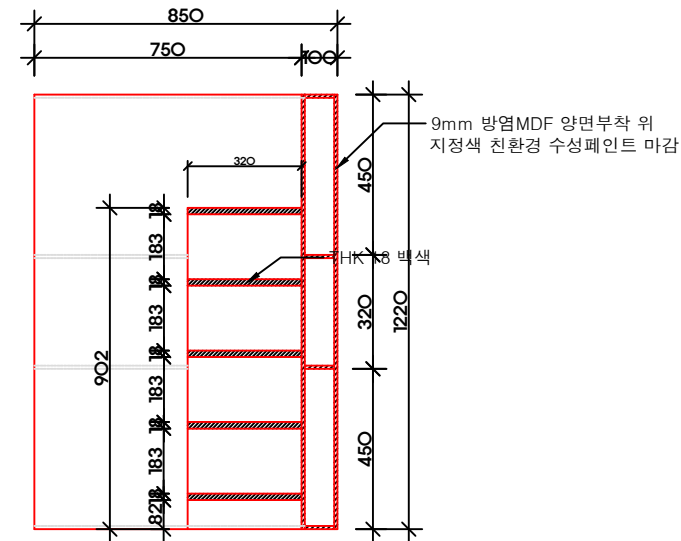
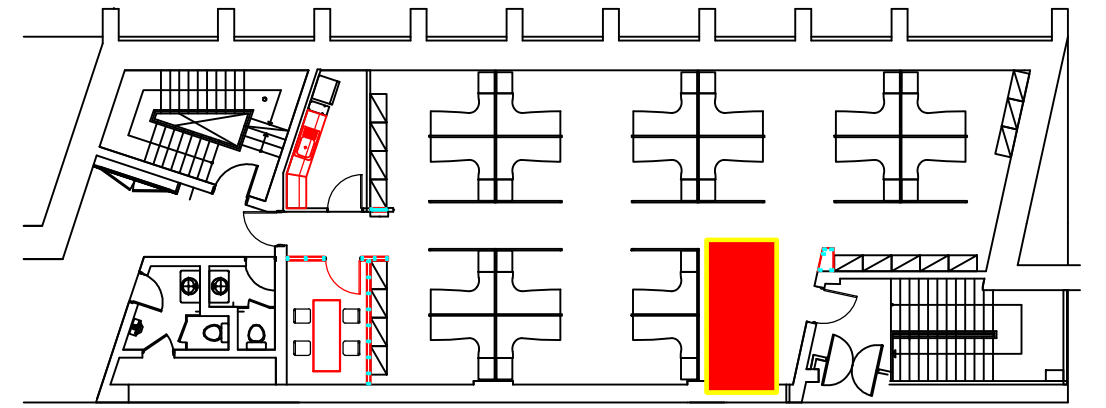
A-101 단면, 입면도



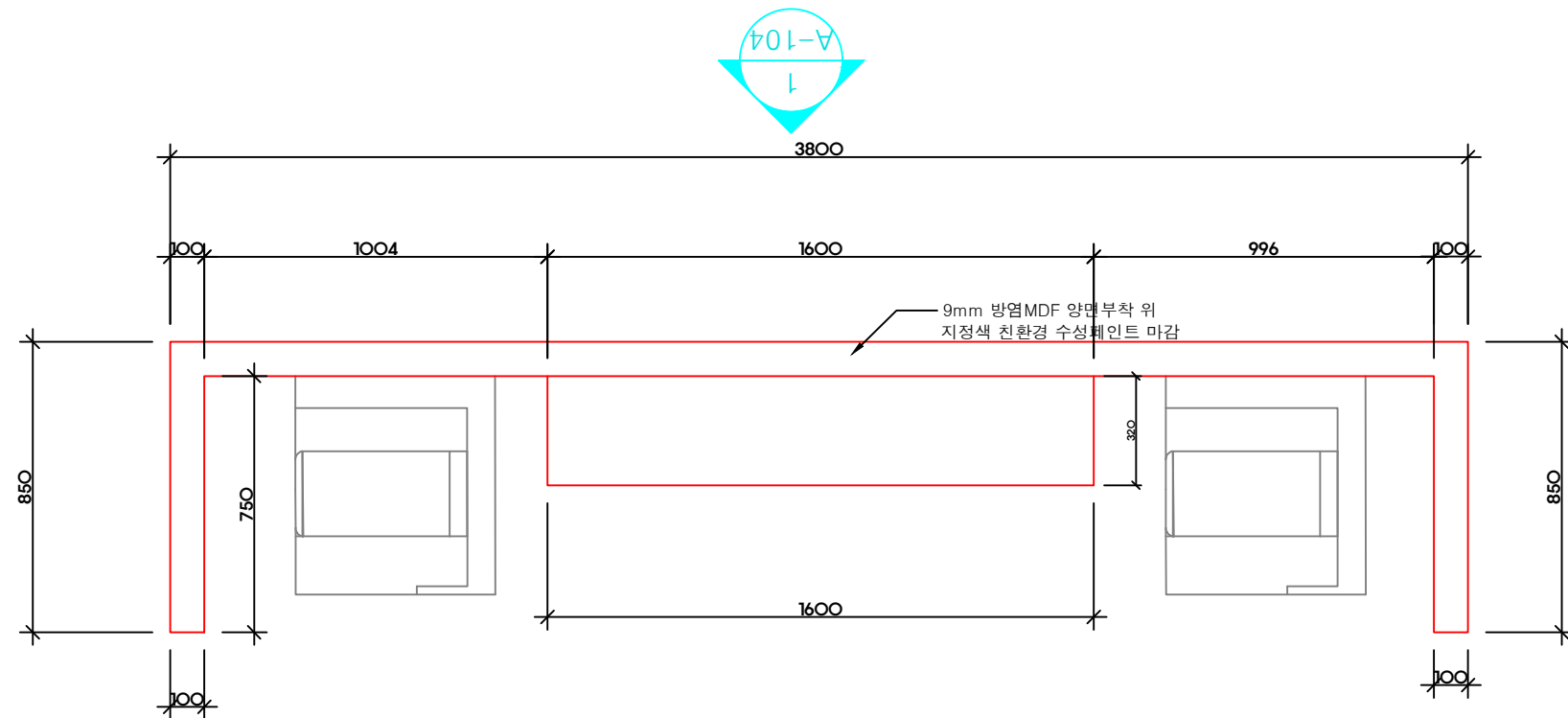
A-102 입면도

1
A-204

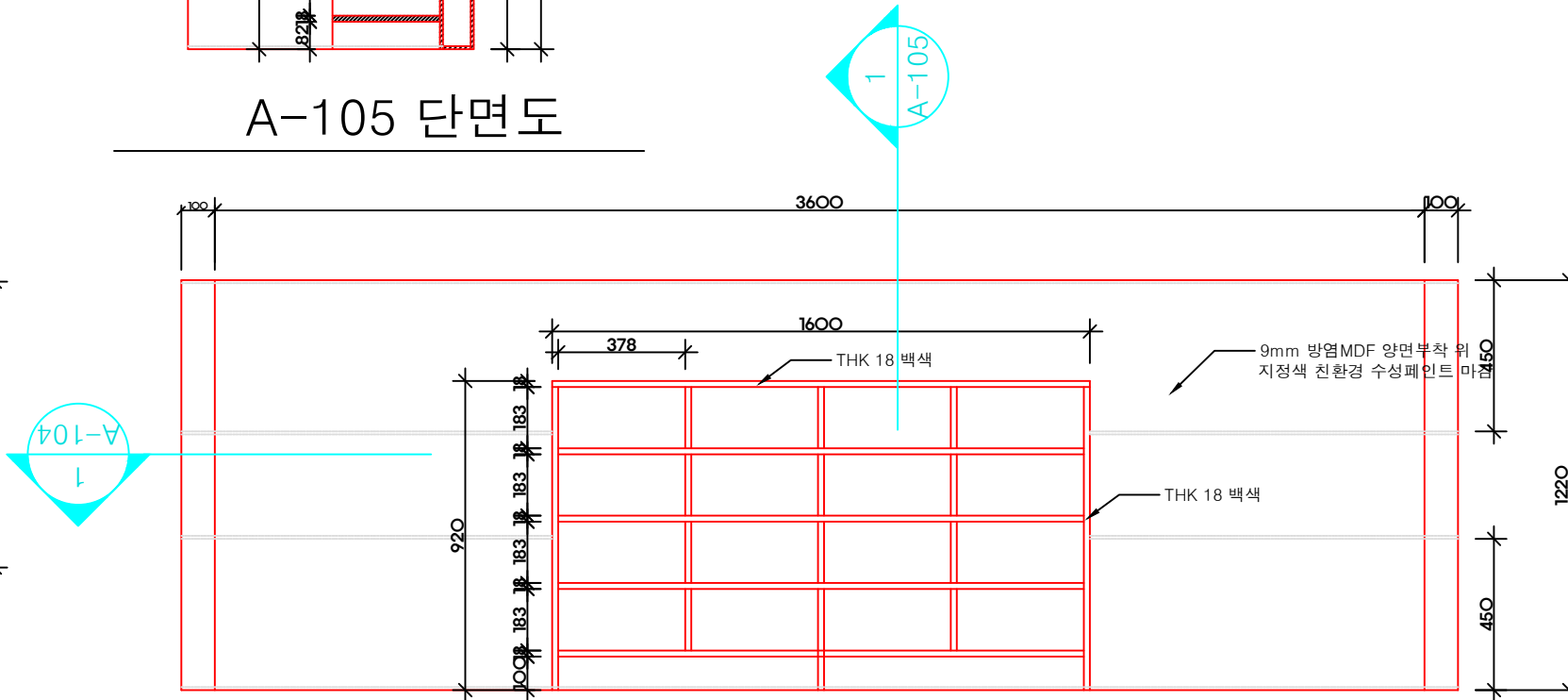
2층 사무실 칸막이 벽



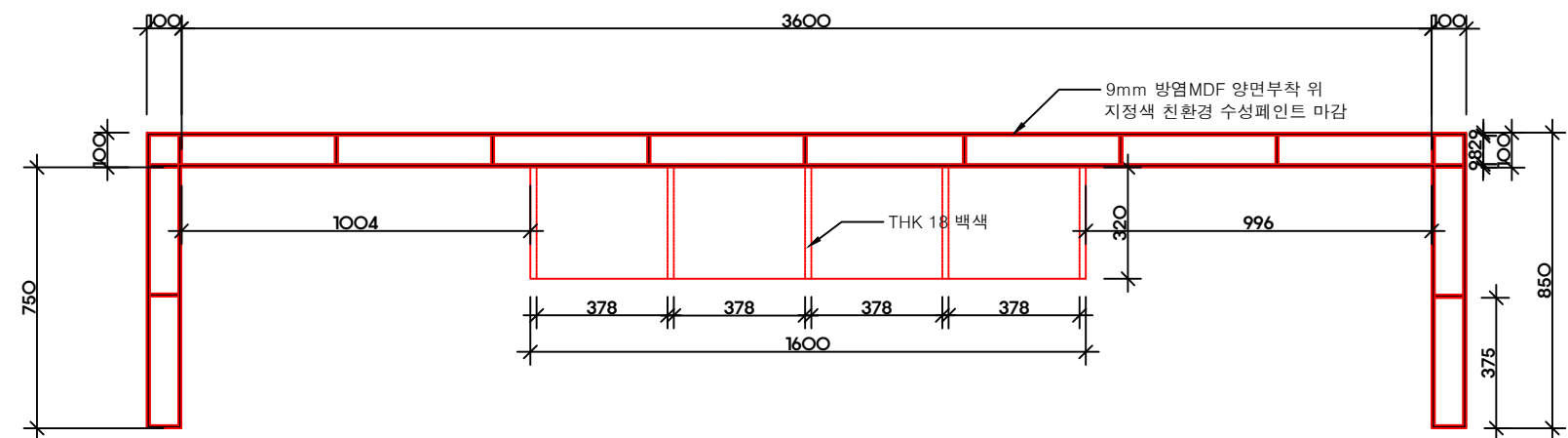
A-105 단면도



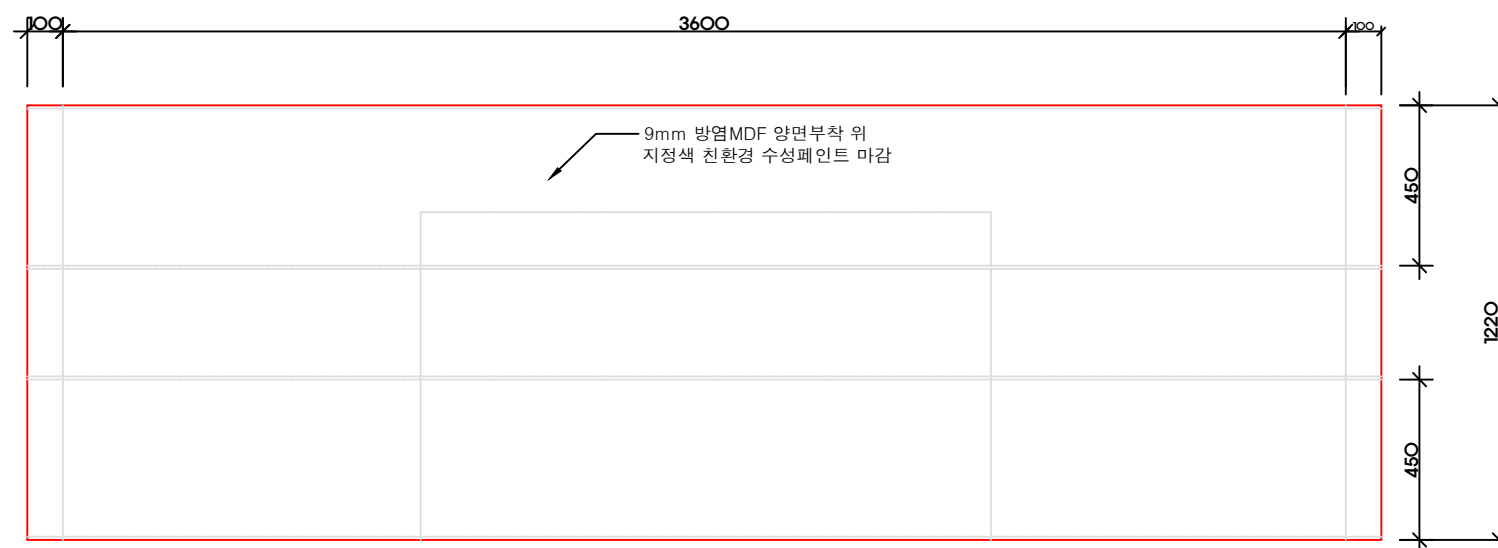
평면도



정면도



A-103 단면도



A-104 입면도

1
A-205

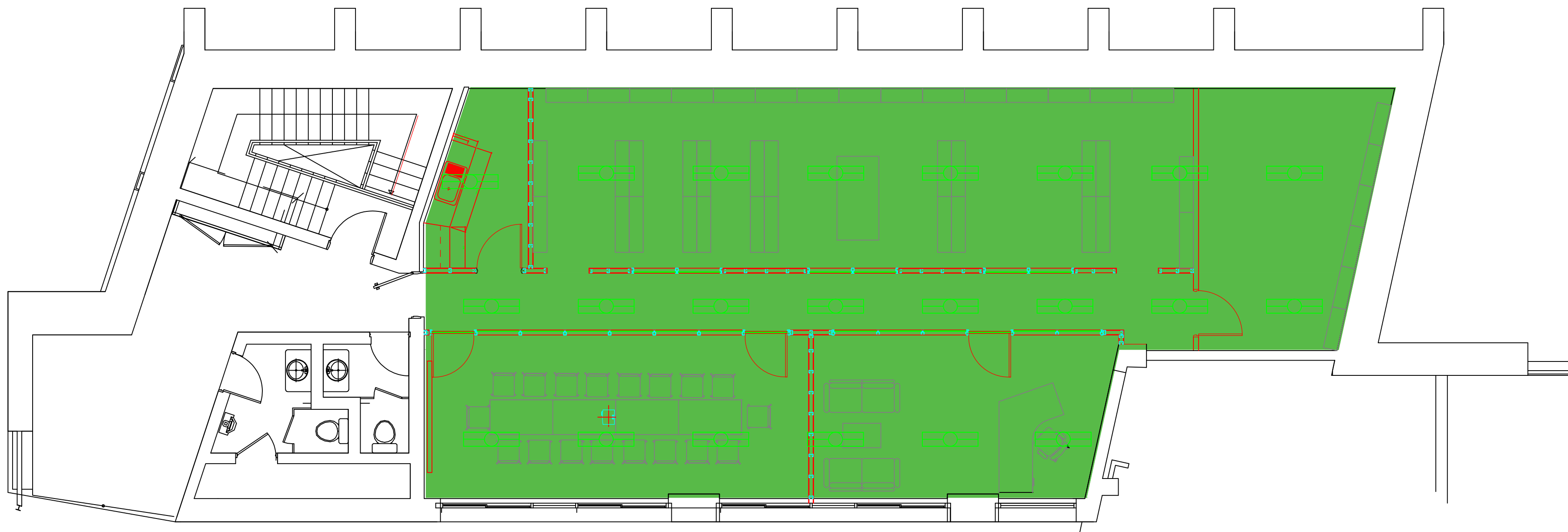
2층 사무실 칸막이 벽

3 층 사무실





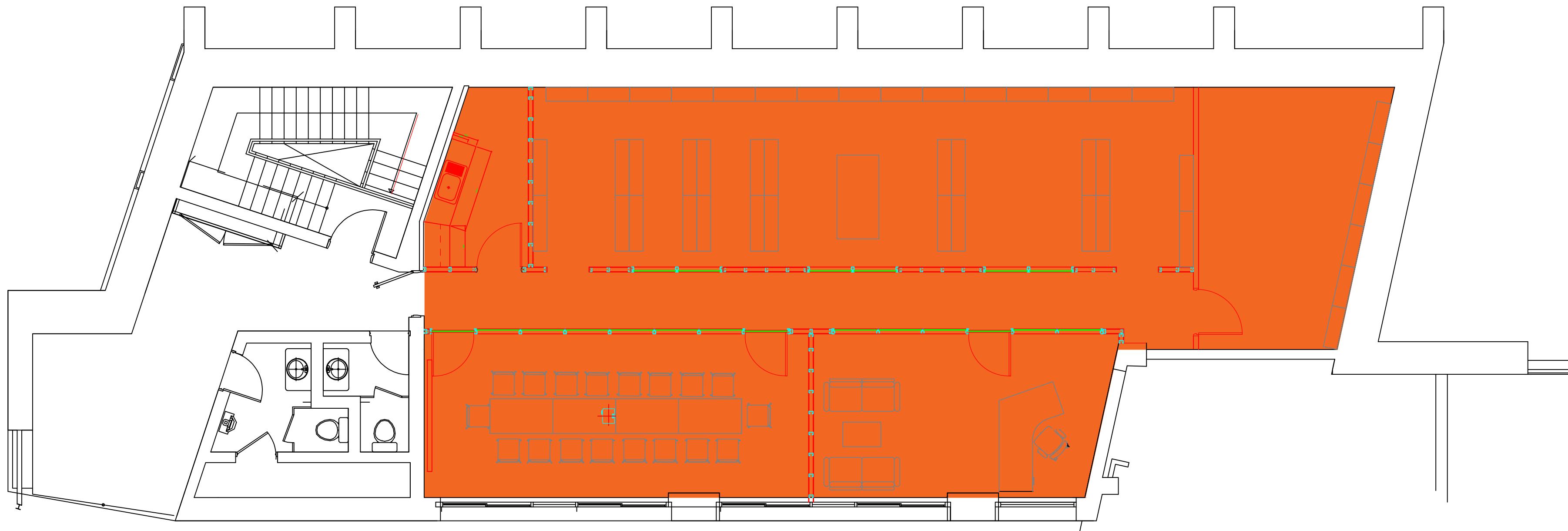
2 3층 사무실 평면도
A-101



2
A-102

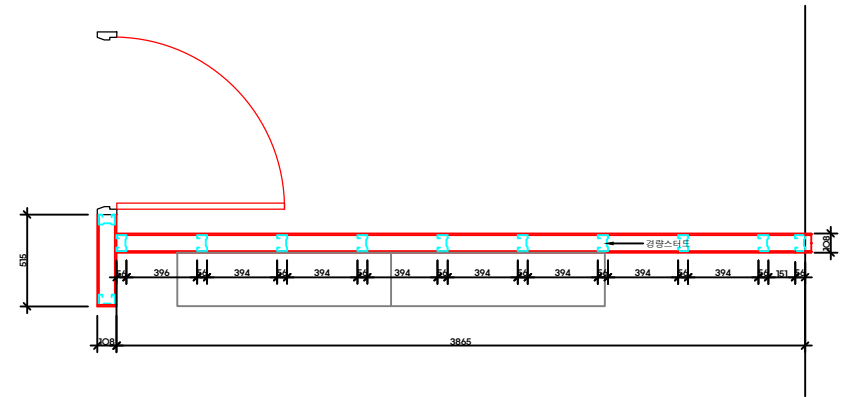
3층 사무실 천정도

주
기
- 기존가벽 철거후 천정보수, 복원
- 기존벽면 및 천정 지정색 재도장

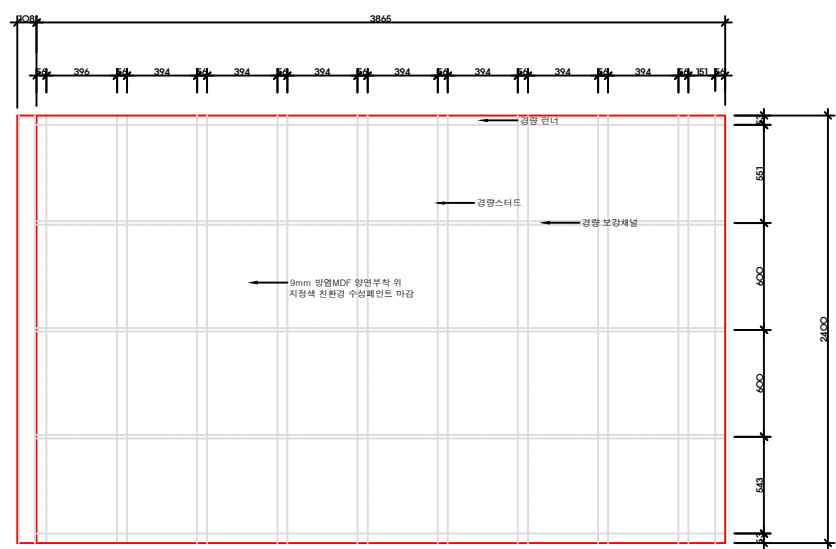


2 3층 사무실 바닥마감도
A-103

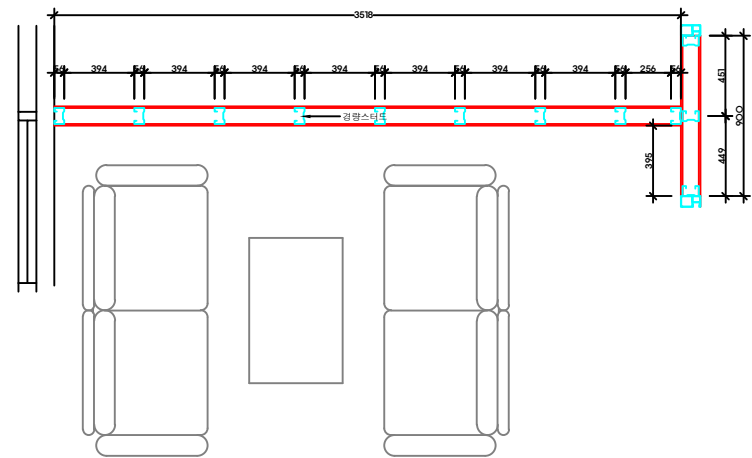
주 기
-. 기존가벽 철거후 바닥보수
-. 바닥 전체 지정색 데코타일
(600x600) 시공



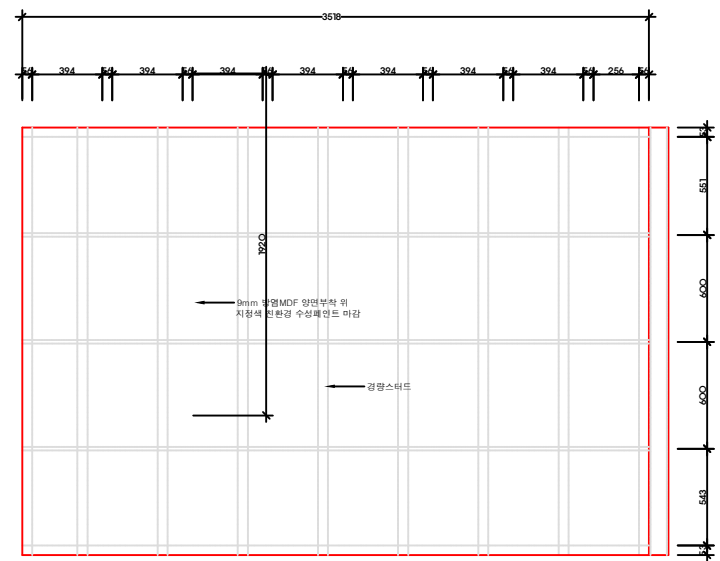
2 3층 사무실 칸막이 벽 평면도
A-204



2 3층 사무실 칸막이 벽 입면도
A-205

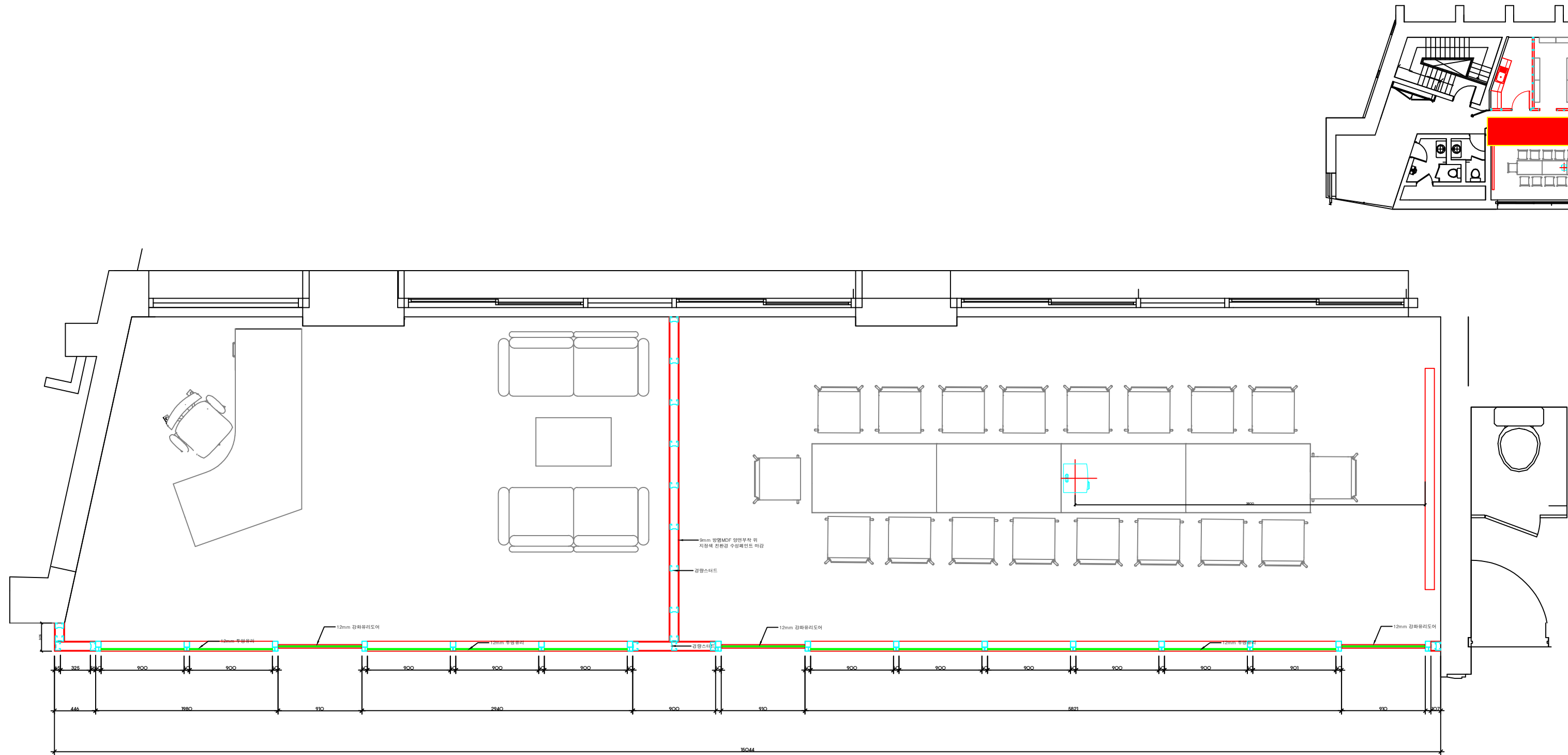


2 3층 사무실 칸막이 벽 평면도
A-206

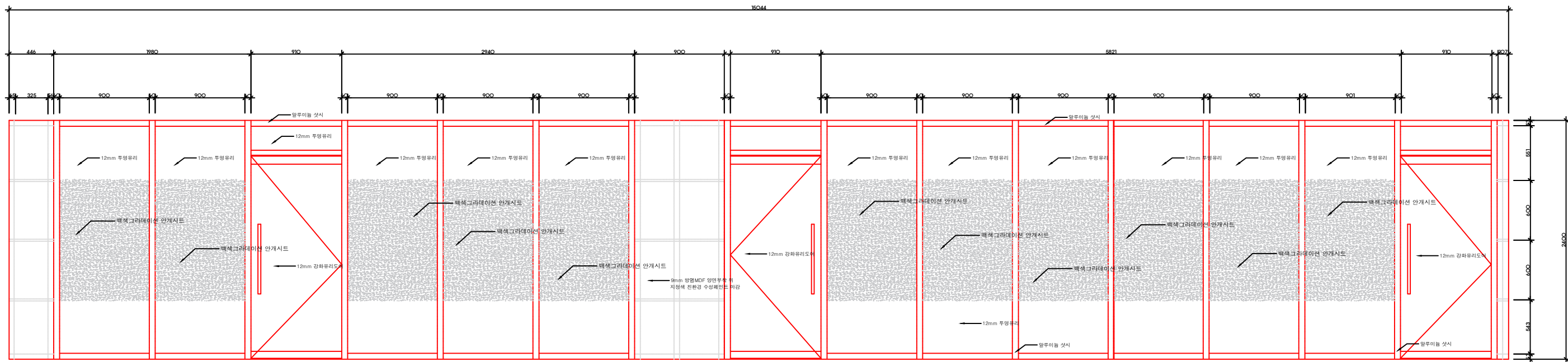


2 3층 사무실 칸막이 벽 입면도
A-207

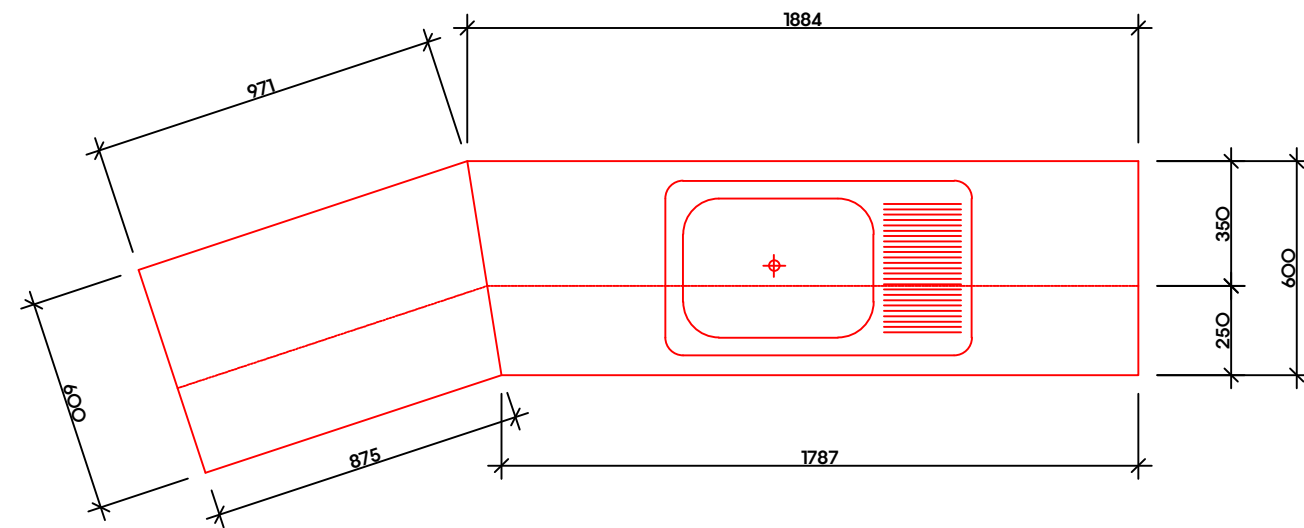




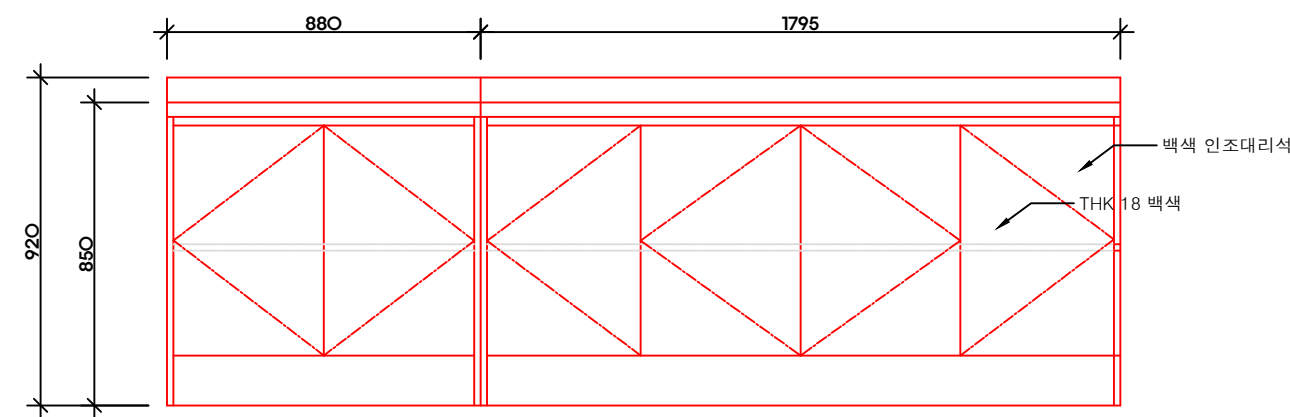
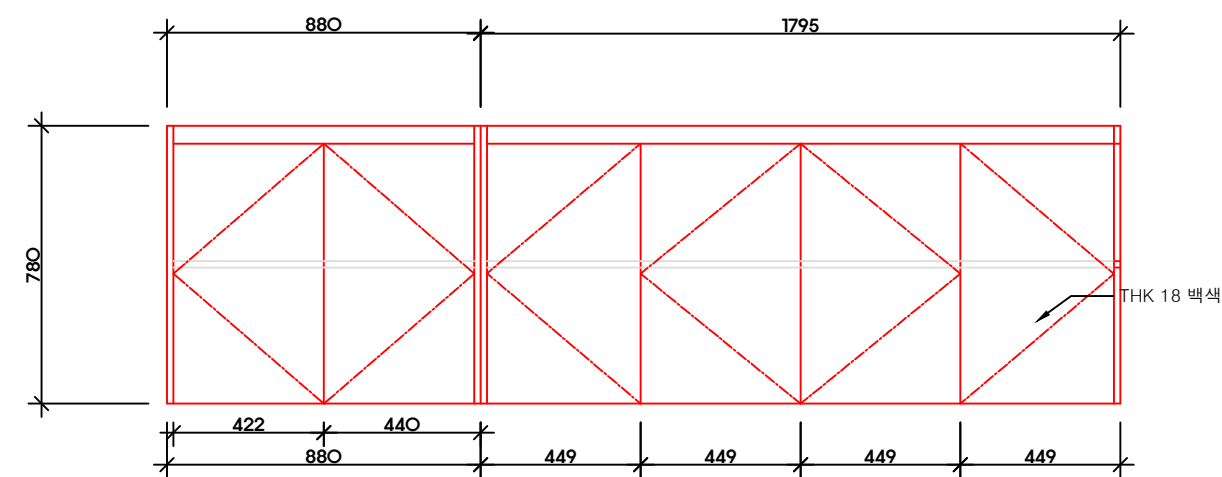
2 3층 사무실 칸막이 벽 평면도
A-208



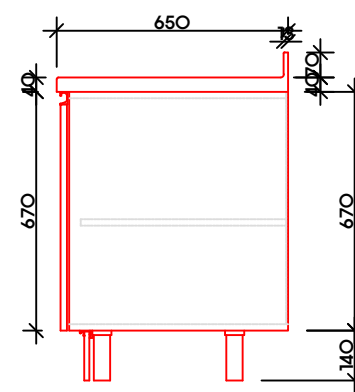
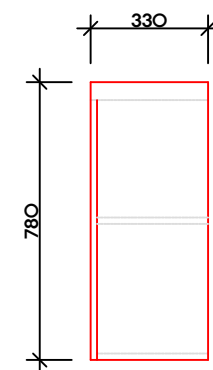
2 3층 사무실 칸막이 벽 입면도
A-209



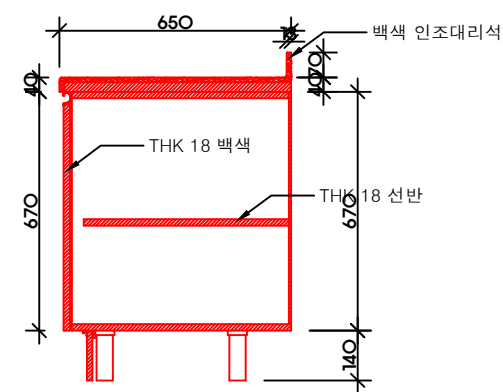
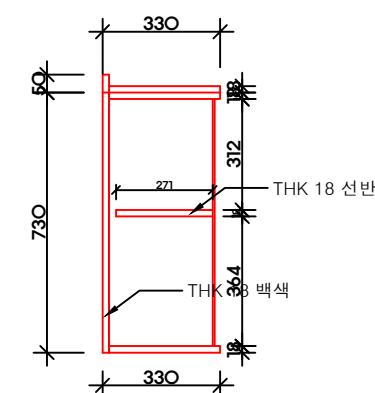
싱크대 평면도



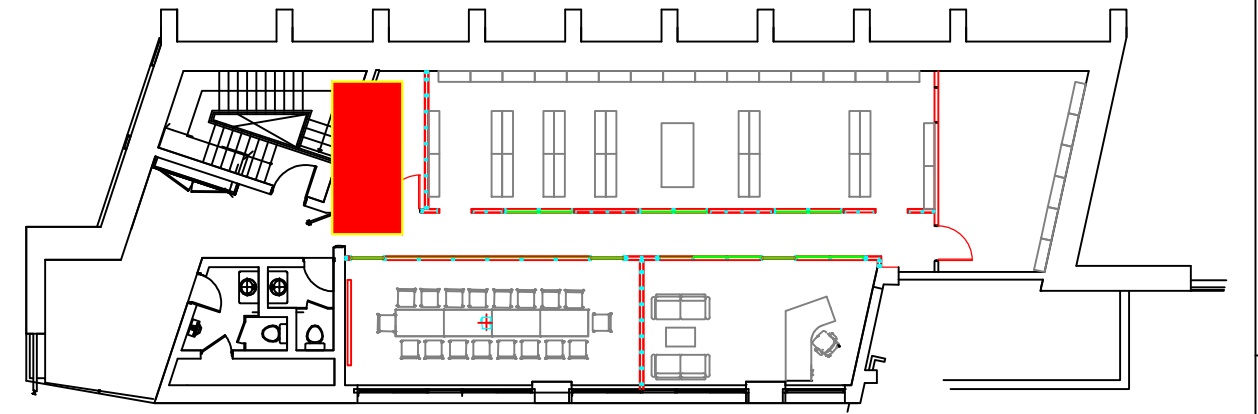
싱크대 입면도



싱크대 측면도



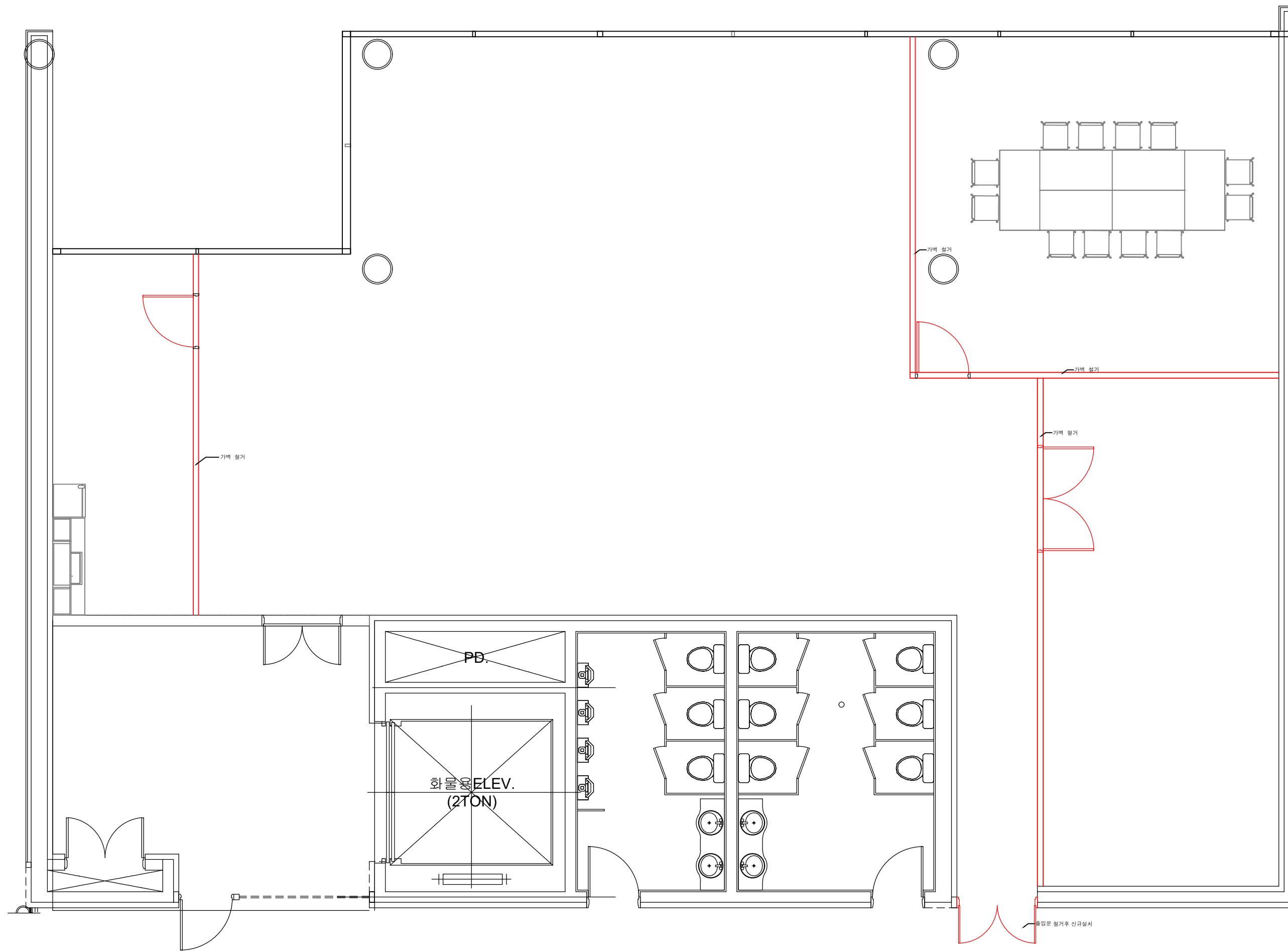
싱크대 단면도



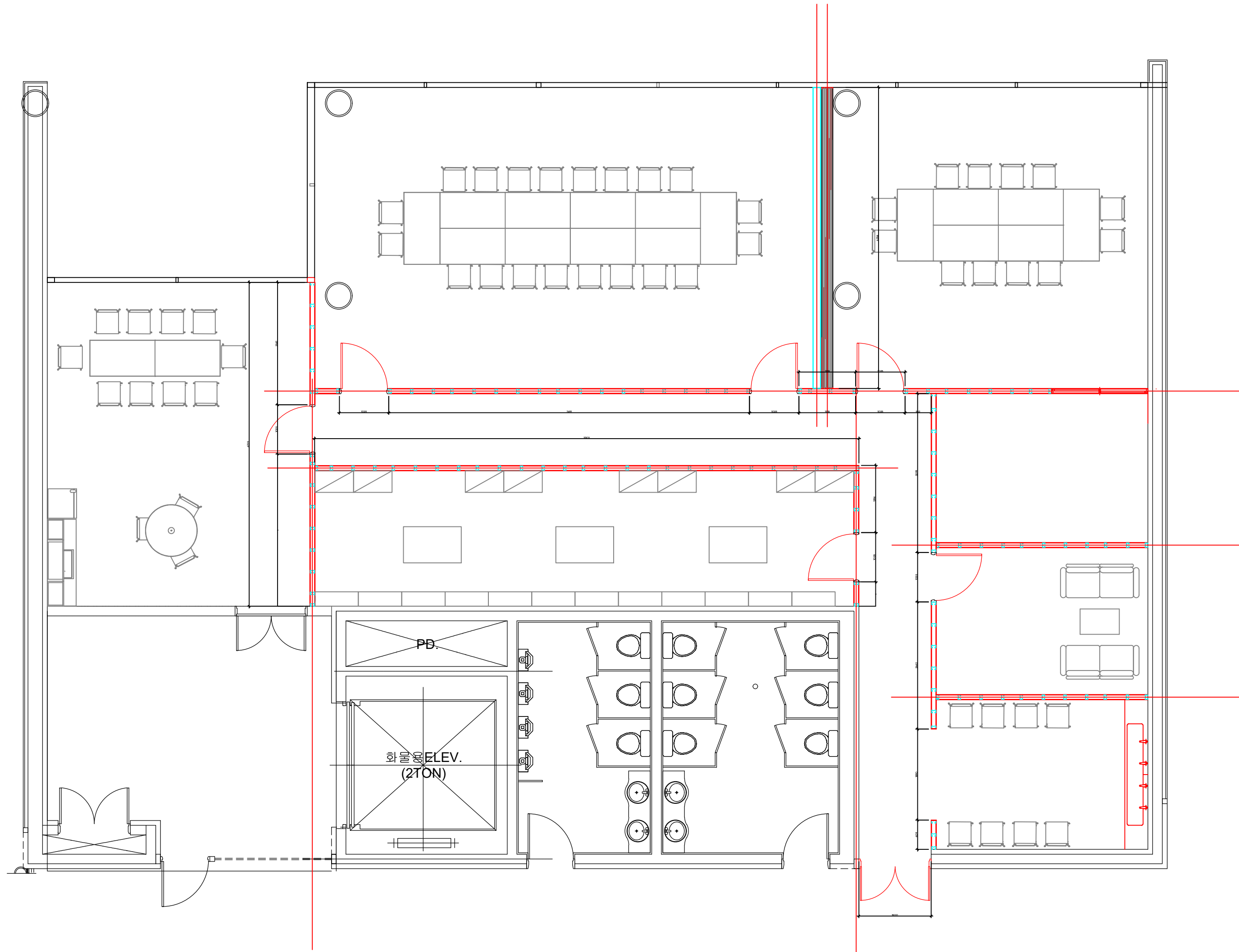
2
A-201

3층 사무실 싱크대

2 층 교육실

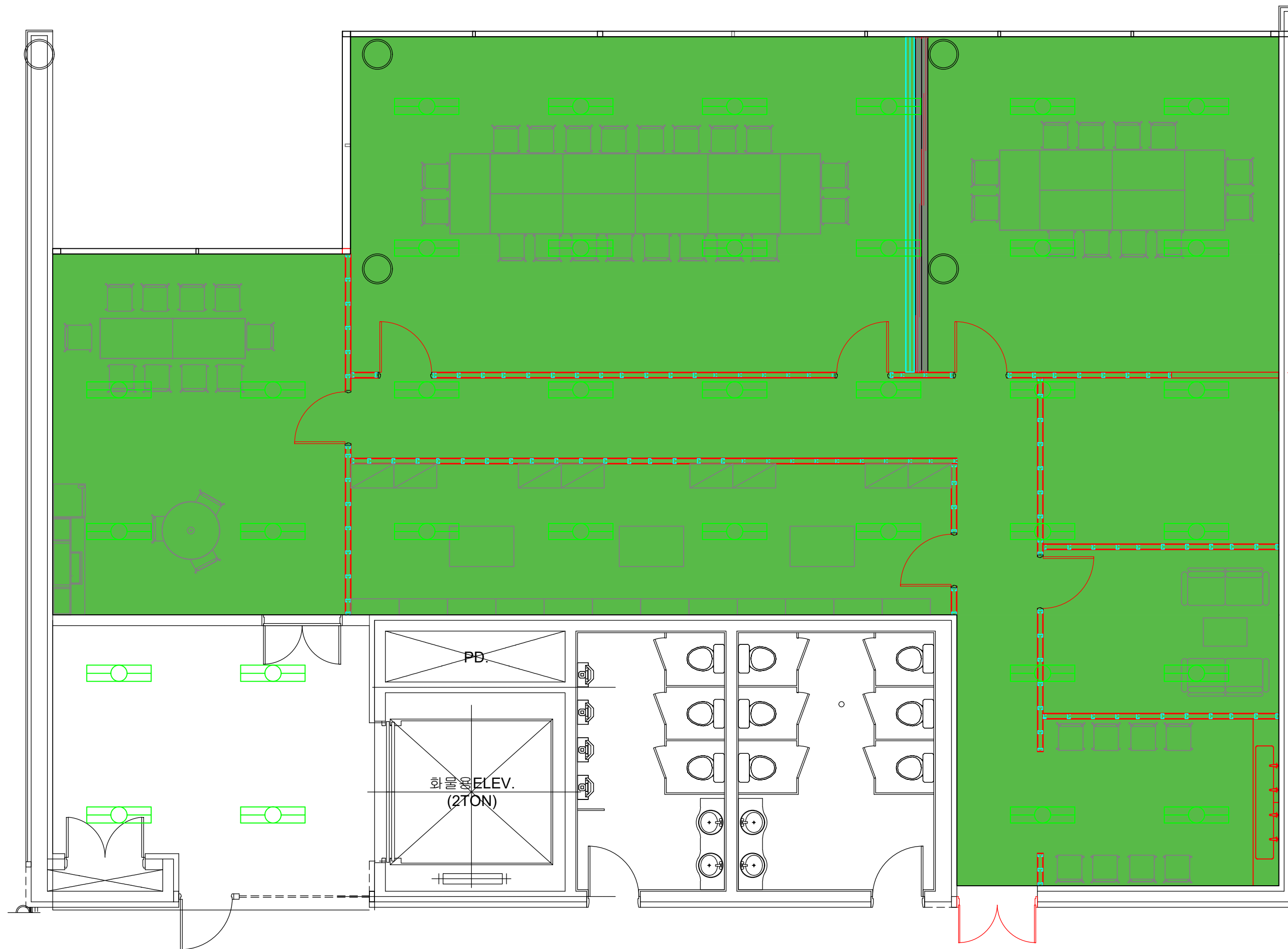


3 2층 교육실 철거 평면도
A-101



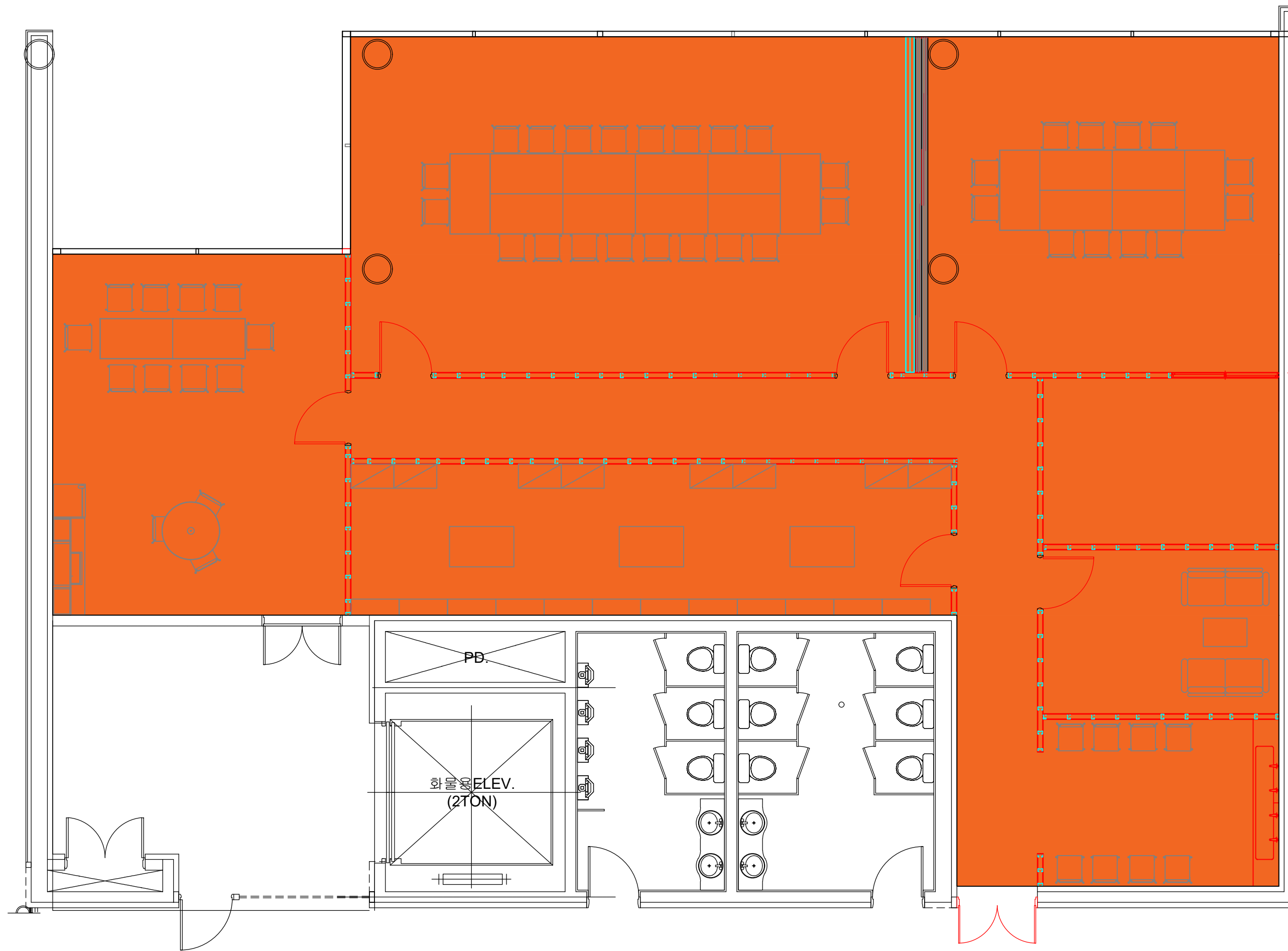
3
A-101

2층 교육실 평면도



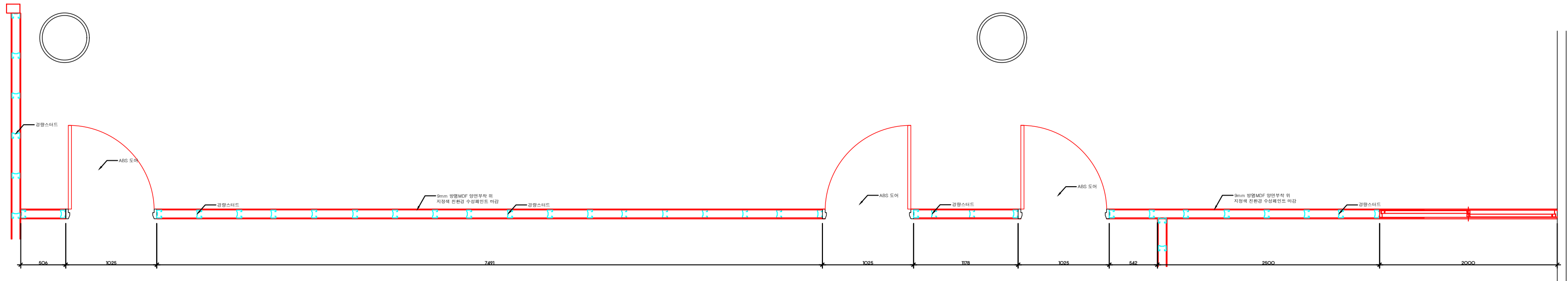
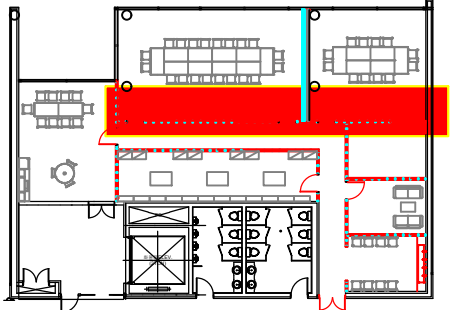
3 2층 교육실 천정도
A-102

주 기
-. 기존가벽 철거후 천정보수, 복원
-. 기존벽면 및 천정 지정색 재도장

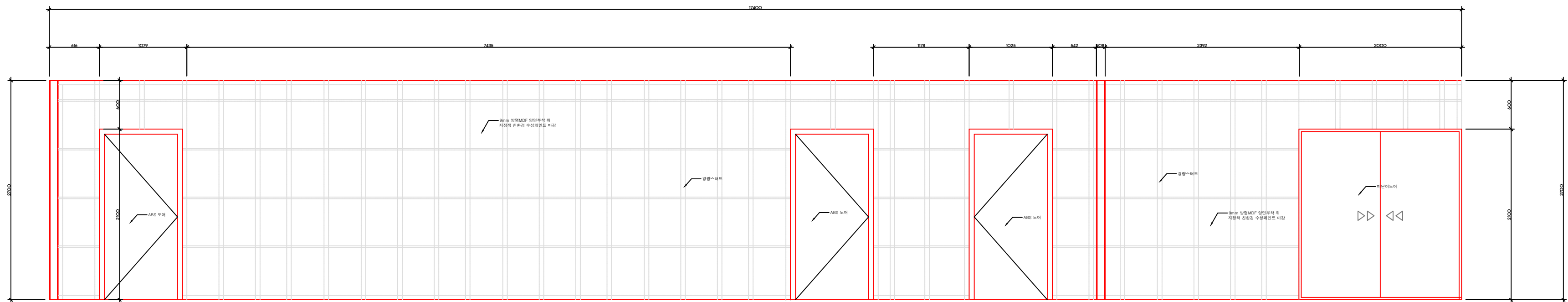


3 2층 교육실 바닥마감도
A-103

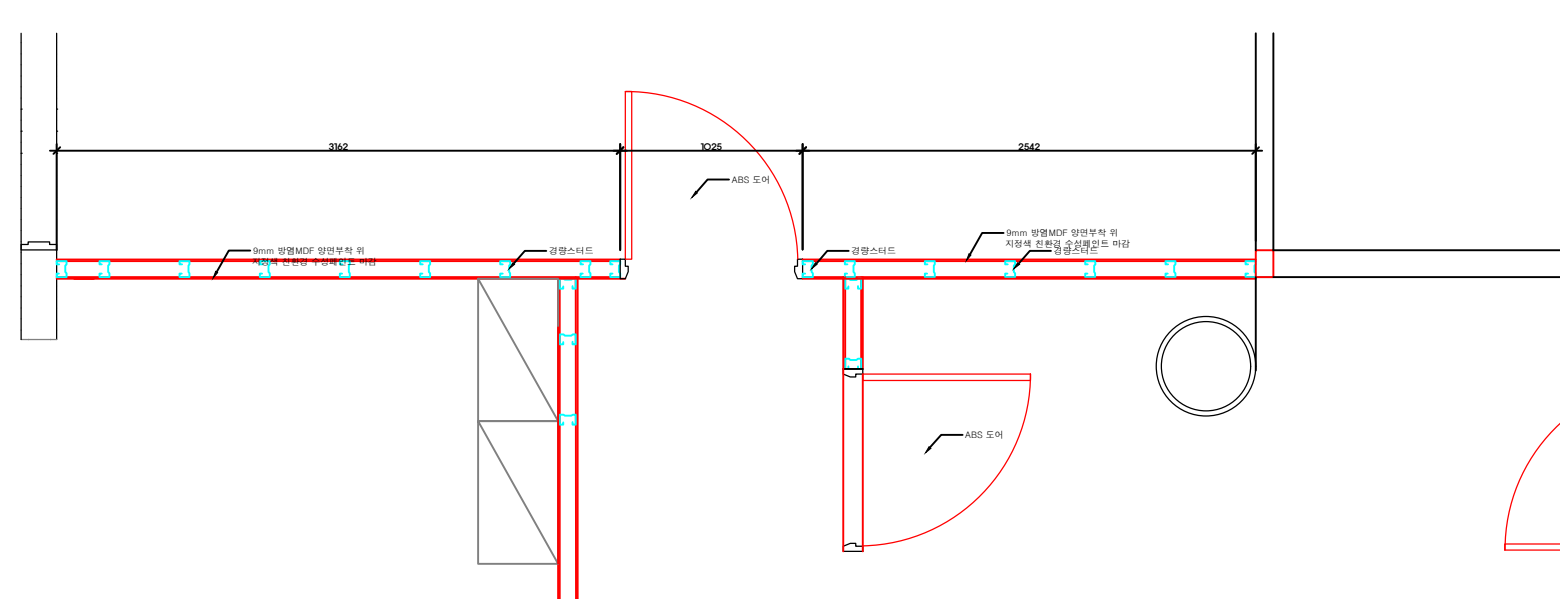
주기
-, 기존가벽 철거후 바닥보수
-, 바닥 전체 세척 및 코팅



3 2층 교육실 칸막이 벽 평면도
A-201



3 2층 교육실 칸막이 벽 입면도
A-202



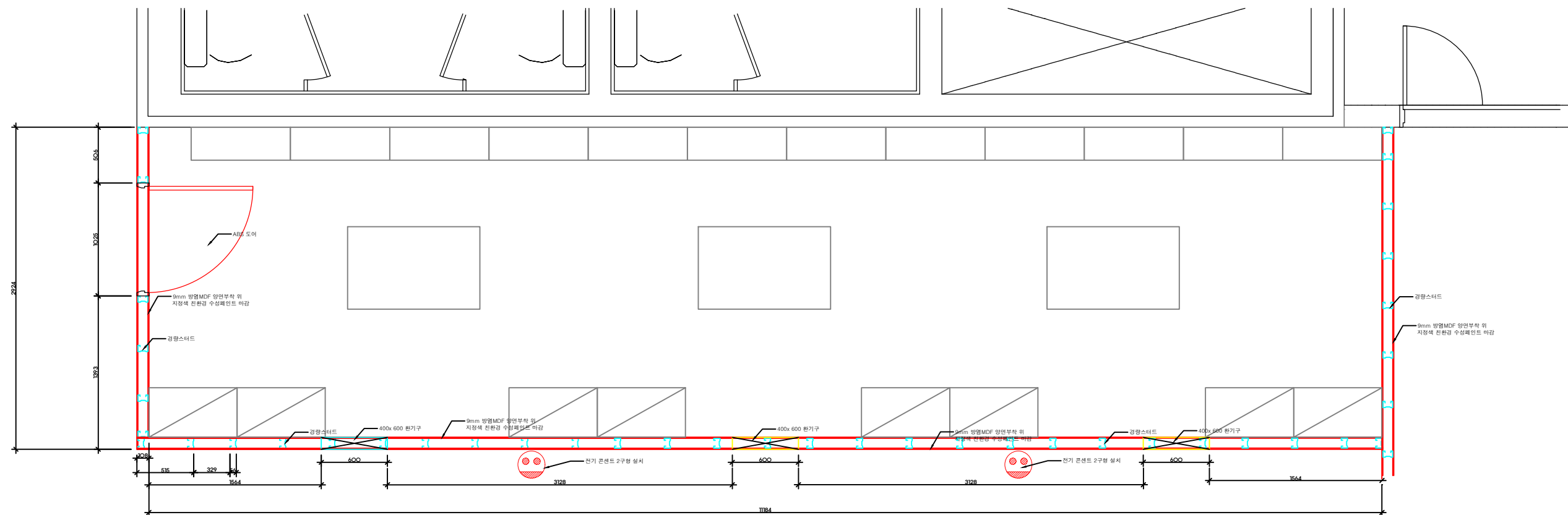
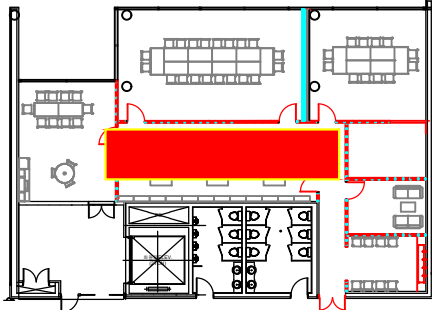
Architectural section drawing of a building facade, showing a red metal roof structure. The drawing includes various components labeled in Korean and dimensions.

Labels and dimensions:

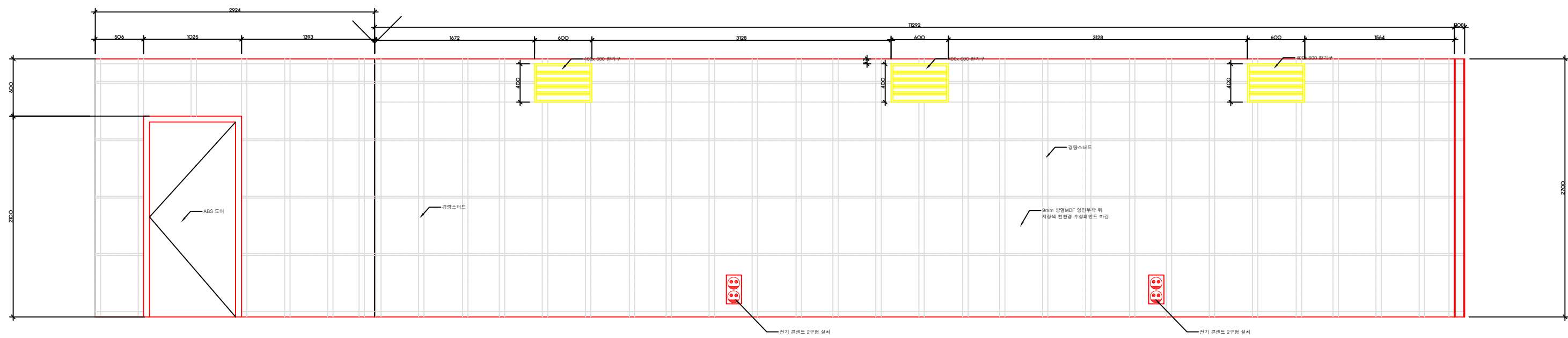
- 강철스택트 (Steel Stack)
- 강철스택트 (Steel Stack)
- 30mm 단열단열(MCM) 상단판 또는 자외선 차단막 수납공간은 하단 (30mm insulation (MCM) top plate or UV blocking film storage space is bottom)
- ABS 도어 (ABS Door)
- 30mm 단열단열(MCM) 상단판 또는 자외선 차단막 수납공간은 하단 (30mm insulation (MCM) top plate or UV blocking film storage space is bottom)
- 강철스택트 (Steel Stack)
- 3000
- 1000
- 2440
- 1800
- 600

[illegible][illegible]

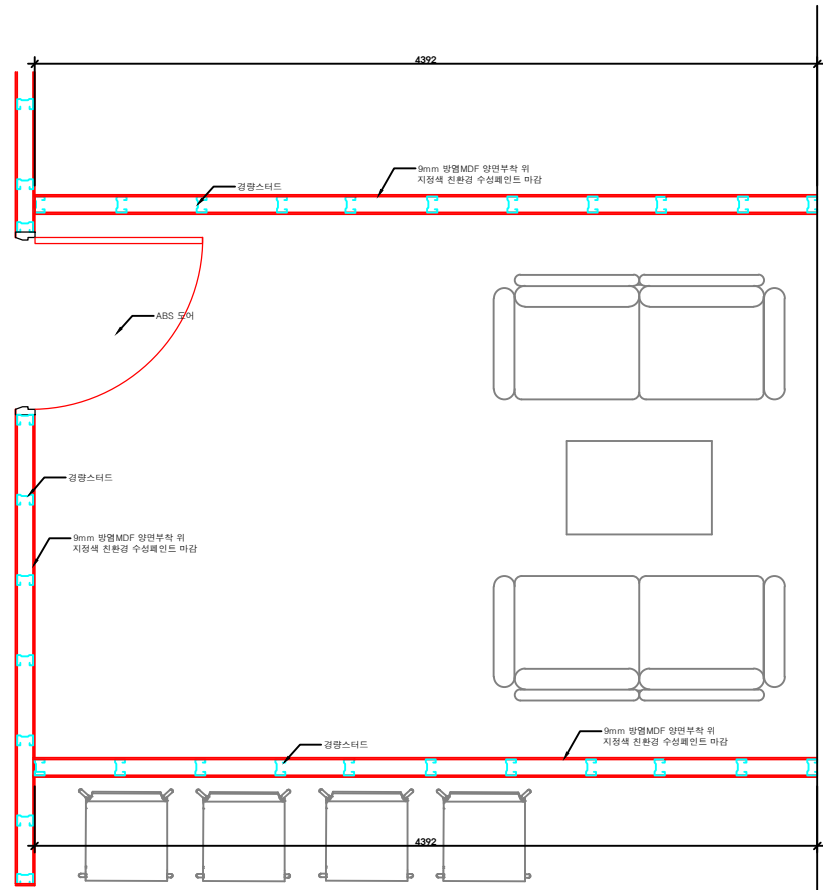
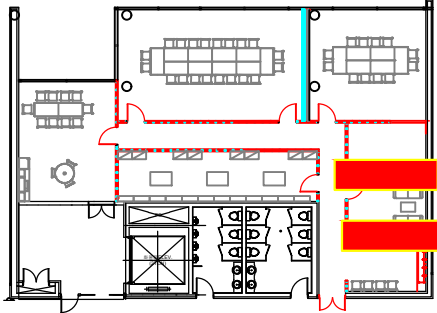
도면번호 /



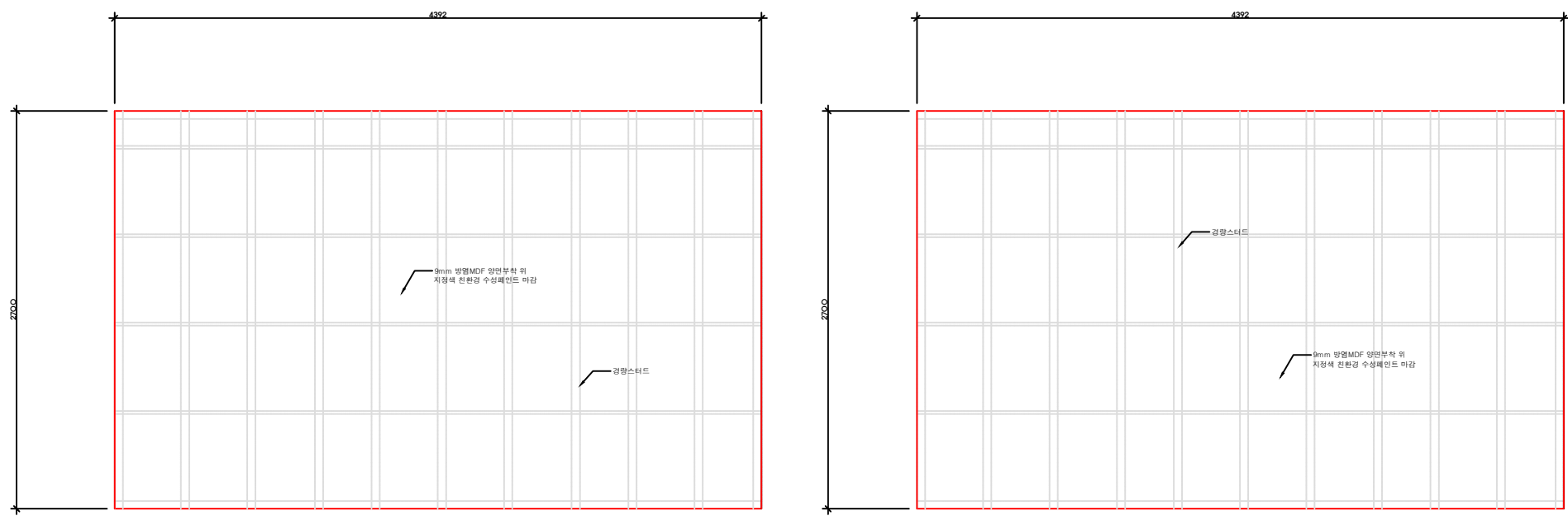
3 2층 교육실 칸막이 벽 평면도
A-207



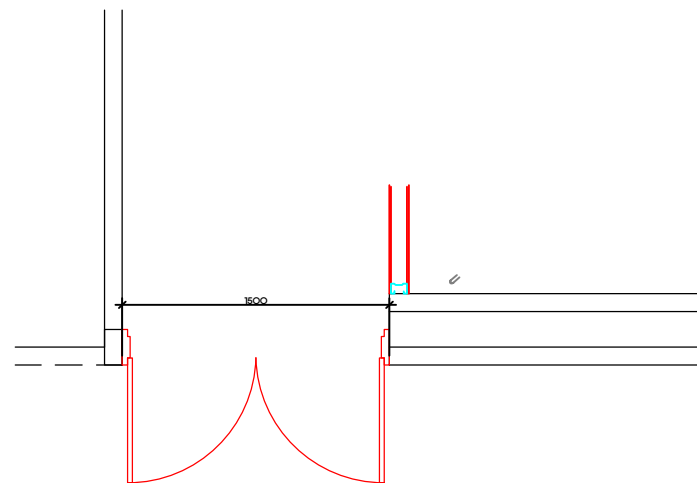
3 2층 교육실 칸막이 벽 입면도
A-208



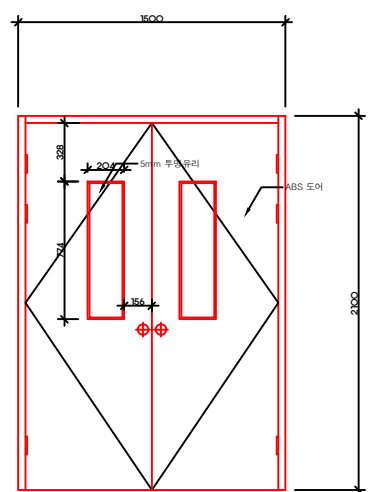
3 2층 교육실 칸막이 벽 평면도
A-209



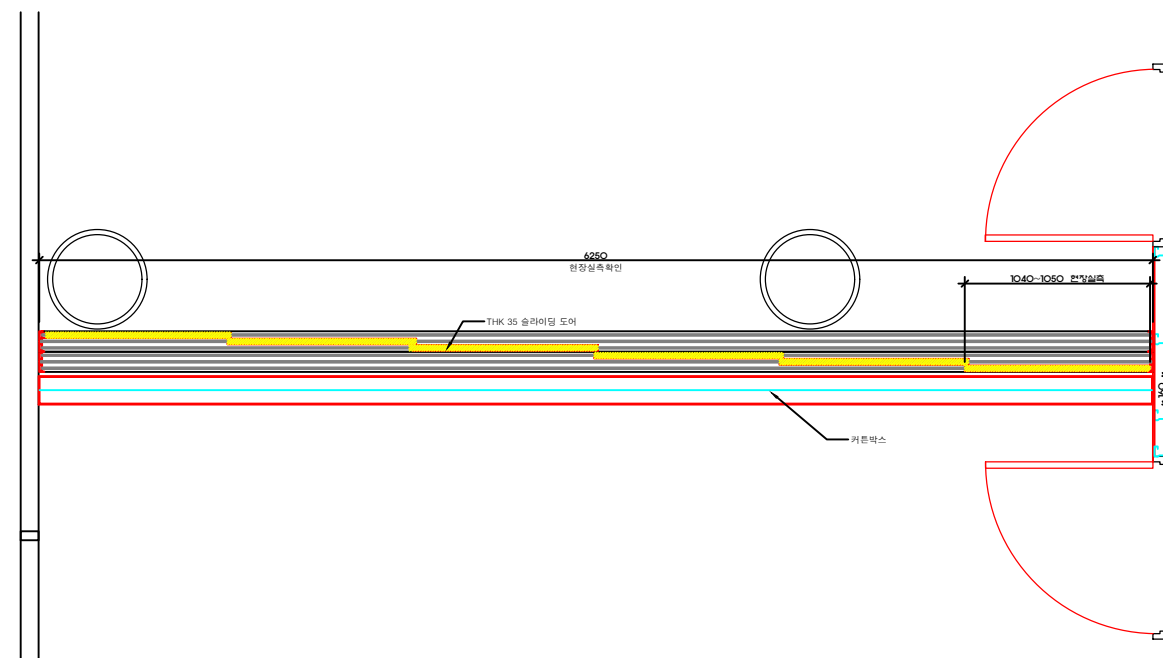
3 2층 교육실 칸막이 벽 입면도
A-210



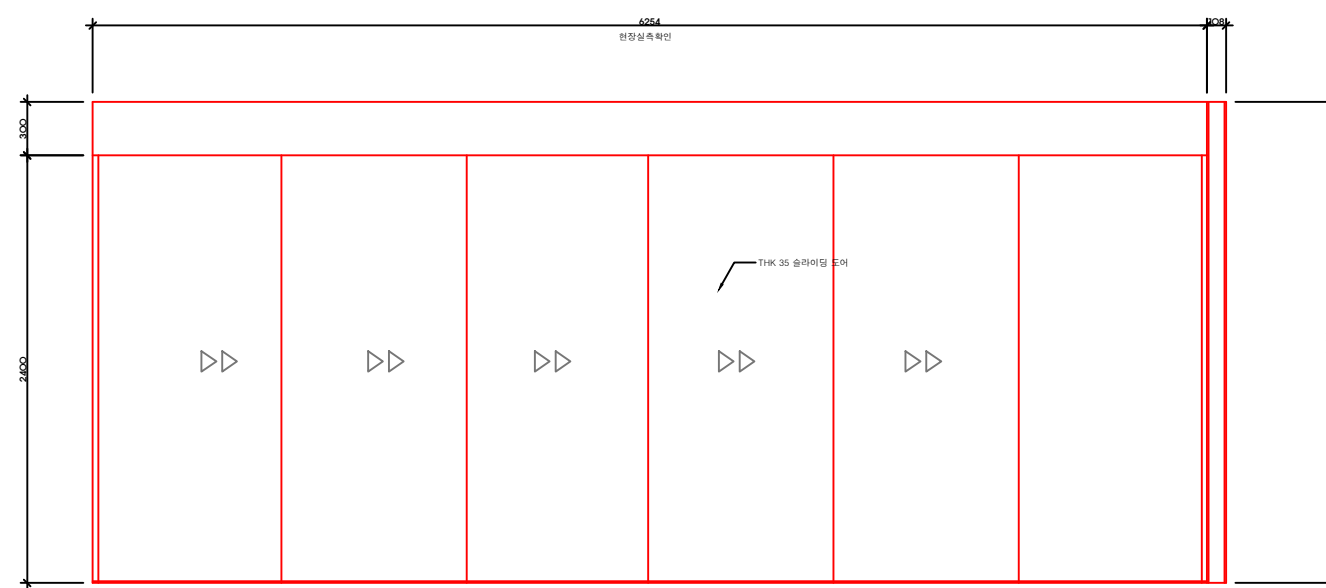
3
A-301 2층 교육실 주출입문 평면도



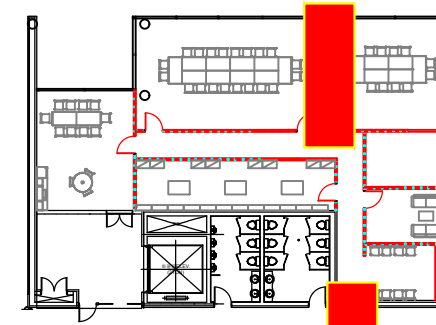
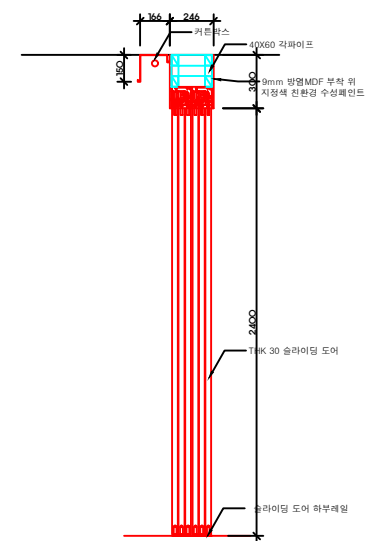
3
A-302 2층 교육실 주출입문 입면도

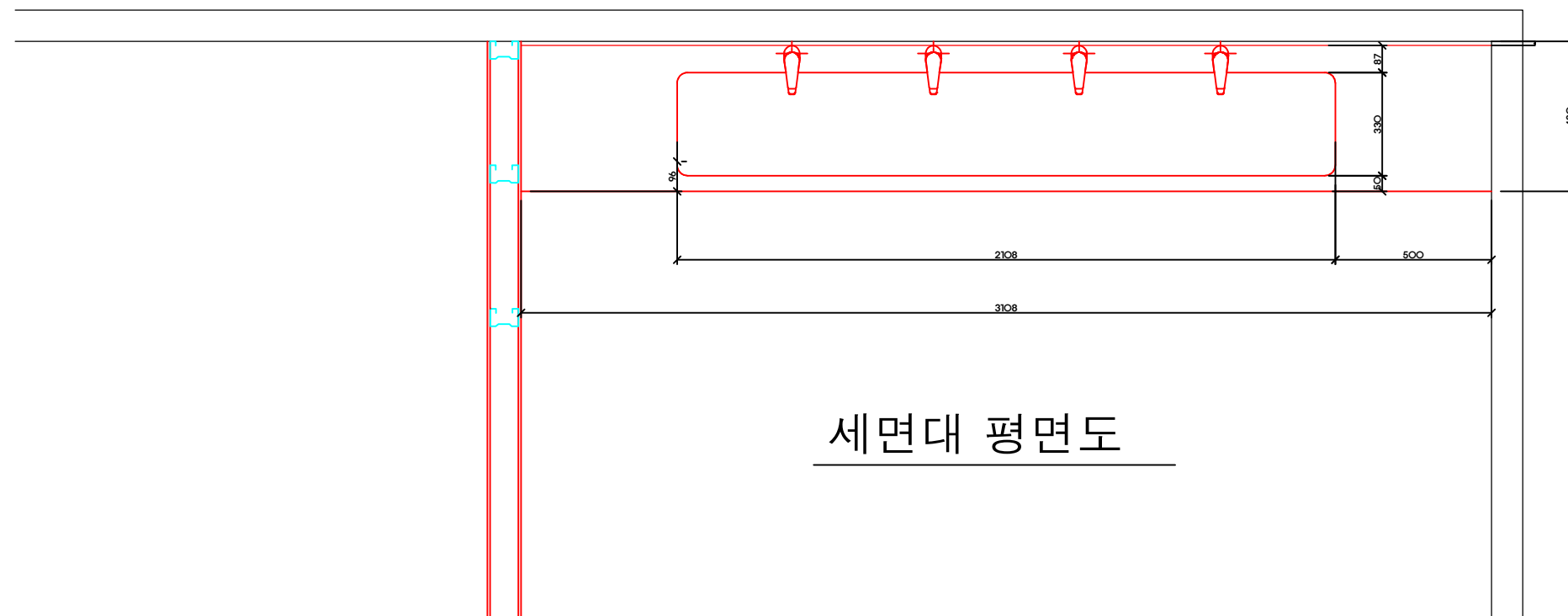
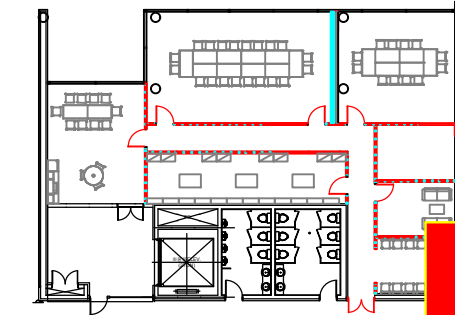


3
A-303 2층 교육실 슬라이딩 벽 평면도

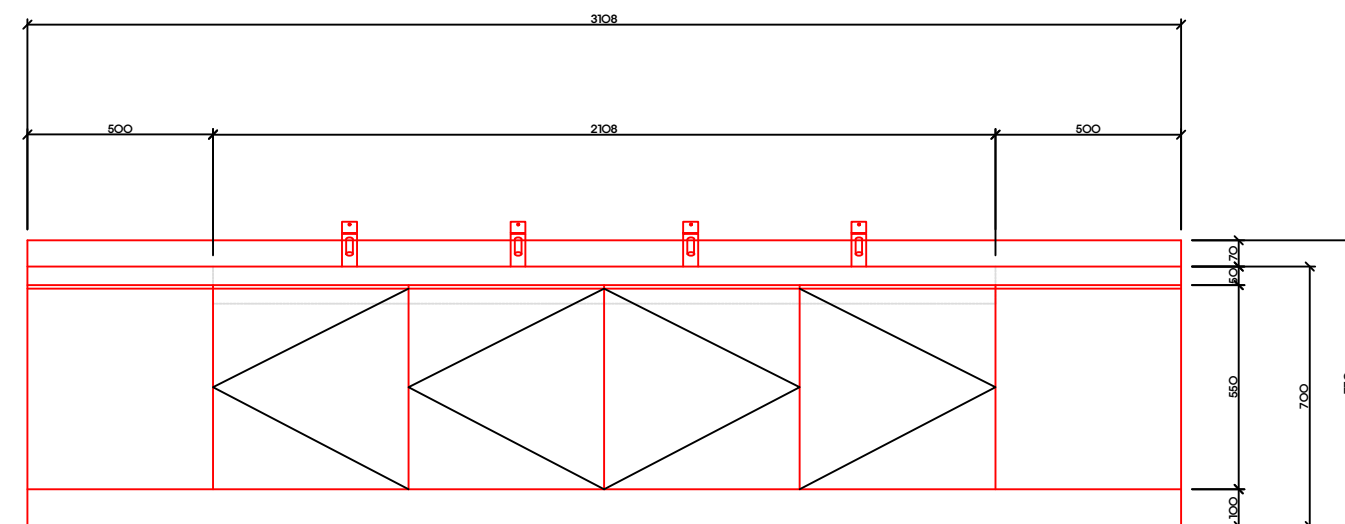


3
A-304 2층 교육실 슬라이딩 벽 입면도, 단면도

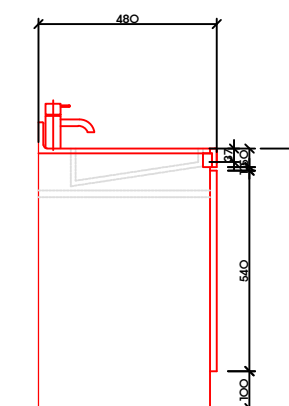




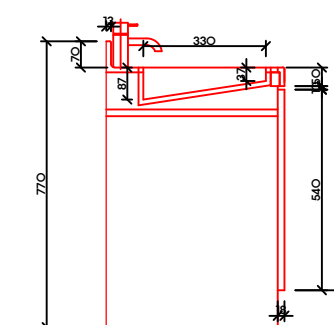
세면대 평면도



세면대 입면도



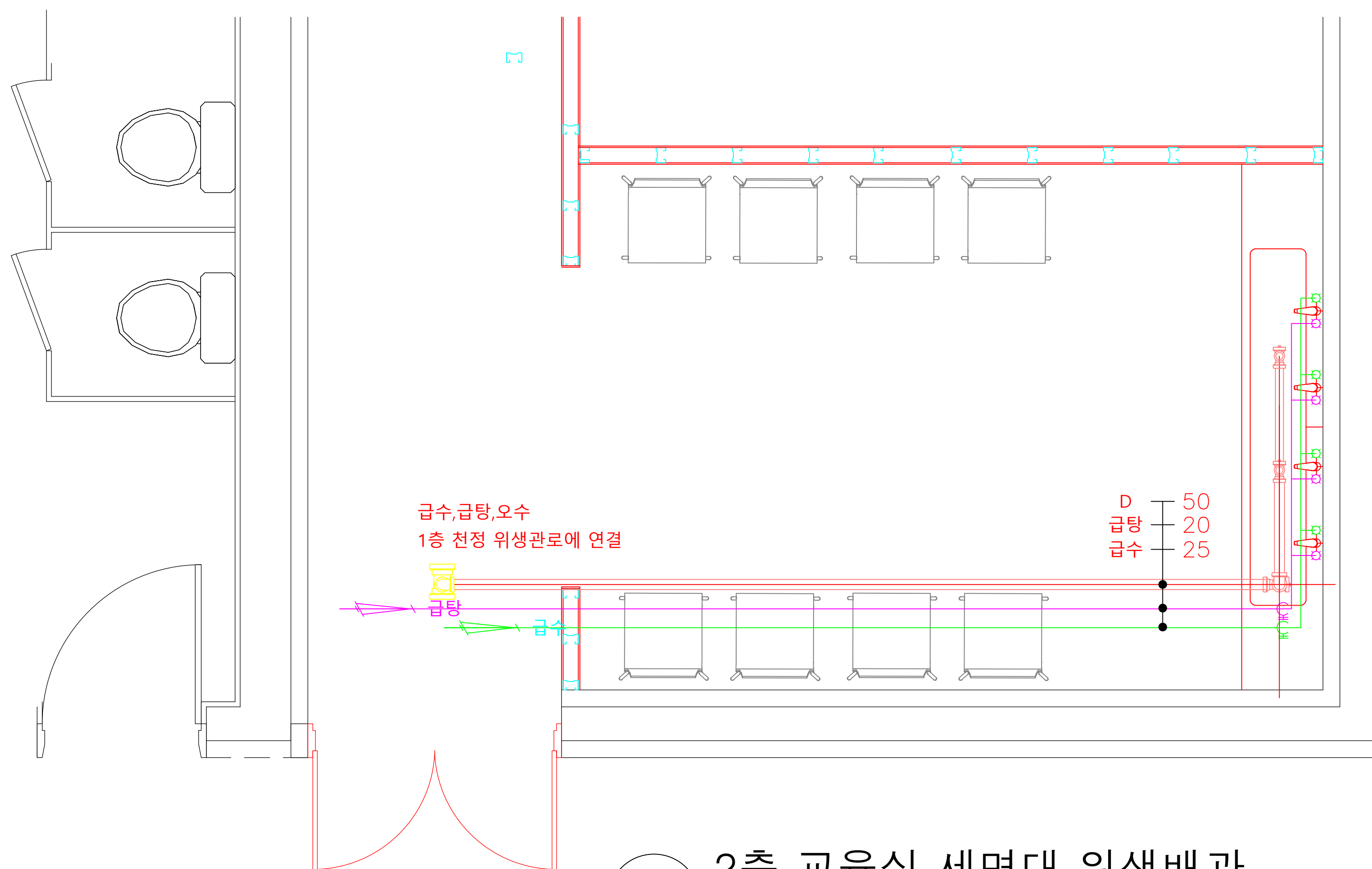
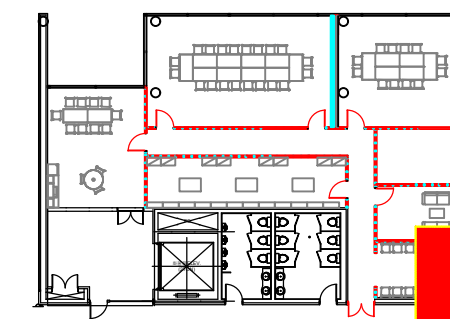
세면대 측면도



세면대 단면도

3
A-305

2층 교육실 세면대



3 2층 교육실 세면대 위생배관
A-305